



**Price**

**£600,000**

**Freehold**

5x  3x  3x 

**Sandwich Road,  
Whitfield, Dover, Kent,  
CT16**

**OVER 60?**

Secure this property  
for up to **59% less!**

*Wards*  
Helping you move forwards

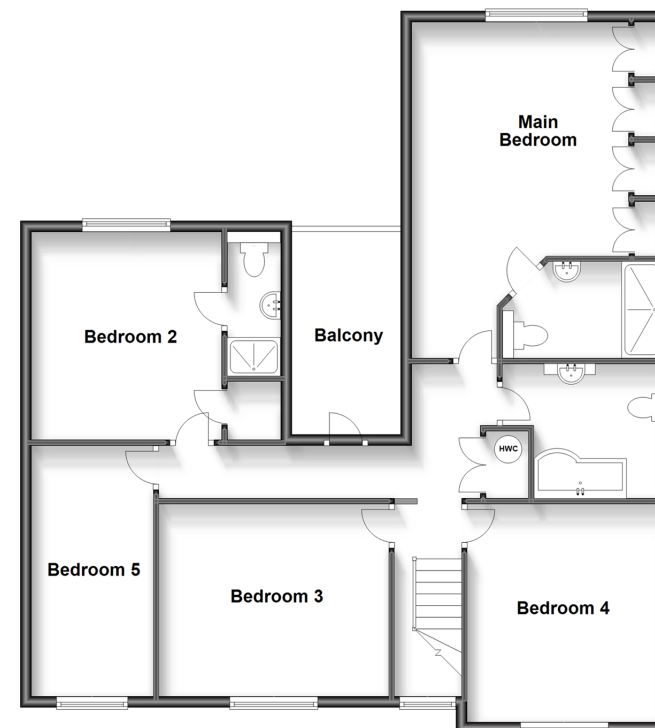
## Ground Floor

Approx. 122.8 sq. metres (1321.4 sq. feet)



## First Floor

Approx. 106.5 sq. metres (1146.8 sq. feet)



## Accommodation

### GROUND FLOOR

Entrance Porch  
Entrance Hallway  
Downstairs Cloakroom  
Lounge : 22'6 x 15'3 (6.86m x 4.65m)  
Utility Room : 9'9 x 6'2 (2.97m x 1.88m)  
Kitchen/Breakfast Room: 20'0 x 15'0 (6.10m x 4.58m)  
Dining Room : 16'0 x 11'6 (4.88m x 3.51m)  
Study : 14'0 x 11'8 (4.27m x 3.56m)

### FIRST FLOOR

Landing  
Main Bedroom: 20'0 x 15'0 (6.10m x 4.58m)  
En-Suite Shower Room  
Bedroom 2 : 12'5 x 11'5 (3.79m x 3.48m)  
En-Suite Shower Room  
Bedroom 3 : 13'0 x 11'7 (3.97m x 3.53m)  
Bedroom 4 : 12'9 x 11'7 (3.89m x 3.53m)  
Bedroom 5 : 15'2 x 7'4 (4.63m x 2.24m)  
Family Bathroom

### OUTSIDE

Front Garden  
Rear Garden  
Driveway & Garage





## Main features

- Large home in the sought after location of Whitfield
- Ample off-road parking and integral garage
- Large enclosed rear garden, perfect for children or pets
- Ideal home for a growing family
- Excellent access to shops & schools and great road links



### Nearest Schools

Primary Schools: Whitfield and Aspen School 0.2 miles, Temple Ewell C of E Primary 1.6 miles, River Primary 1.7 miles  
Secondary Schools: Dover Christchurch Academy 0.8 miles, Dover Grammar School for Boys 1.9 miles



### Transport Information

Train Stations: Kearsney 1.3 miles, Shepherdswell 4.2 miles, Martin Mill 4.4 miles



### Address

Sandwich Road, Whitfield, Dover, Kent, CT16



### Directions

For directions to this property please contact us.





**Wards**  
Helping you move forwards

Call Dover Branch 01304 214876 ■ [wardsofkent.co.uk](http://wardsofkent.co.uk)



- Legal advice should be taken to verify fixtures/fittings, planning, alterations and/or lease details
- Appliances & services are untested, dimensions are approximate and floor plans are not to scale
- Through a Homewise Home For Life Plan people aged 60+ can secure this property for up to 59% less, by purchasing a Lifetime Lease.



10728301/20230609/TE/GM