



OVER 60?

Secure this property
for up to **59% less!**

Guide Price
£325,000

Freehold

3x  1x  2x 

**Lewisham Road, River,
Dover, Kent, CT17**

Wards
Helping you move forwards



Main features

- Extended family house in the sought-after location of River
- Close proximity to the ever-popular River primary school
- Ideal home for a growing family
- Good size enclosed rear garden, ideal for children or pets
- Only a short walk to the beautiful Kearsney Abbey

Accommodation

GROUND FLOOR

Entrance Lobby

Entrance Hallway

Lounge : 11'8 x 11'1 (3.56m x 3.38m)

Dining Area : 13'0 x 10'8 (3.97m x 3.25m)

Family Room : 9'8 x 8'6 (2.95m x 2.59m)

Kitchen : 9'5 x 6'4 (2.87m x 1.93m) plus 6'4 x 8'4 (1.93m x 2.54m)

FIRST FLOOR

Landing

Bedroom 1: 12'2 x 11'5 (3.71m x 3.48m)

Bedroom 2 : 11'10 x 8'4 (3.61m x 2.54m)

Bedroom 3 : 8'8 x 7'1 (2.64m x 2.16m)

Family Bathroom

OUTSIDE

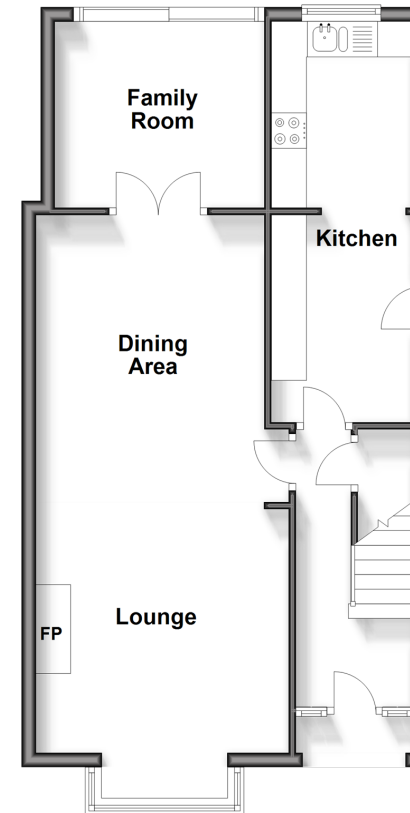
Front Garden

Rear Garden

Large Shed

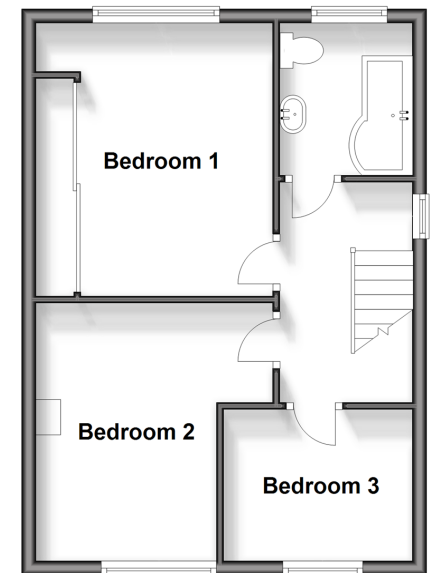
Ground Floor

Approx. 54.1 sq. metres (582.5 sq. feet)



First Floor

Approx. 40.8 sq. metres (438.7 sq. feet)



Call Dover - 01304 214876 ■ wardsofkent.co.uk

- Legal advice should be taken to verify fixtures/fittings, planning, alterations and/or lease details
- Appliances & services are untested, dimensions are approximate and floor plans are not to scale
- Through a Homewise Home For Life Plan people aged 60+ can secure this property for up to 59% less, by purchasing a Lifetime Lease.



10729926/20240514/GM/GM