



**Price**  
**£525,000**

**Freehold**

4x  1x  2x 

**Lower Road, Temple  
Ewell, Dover, Kent, CT16**

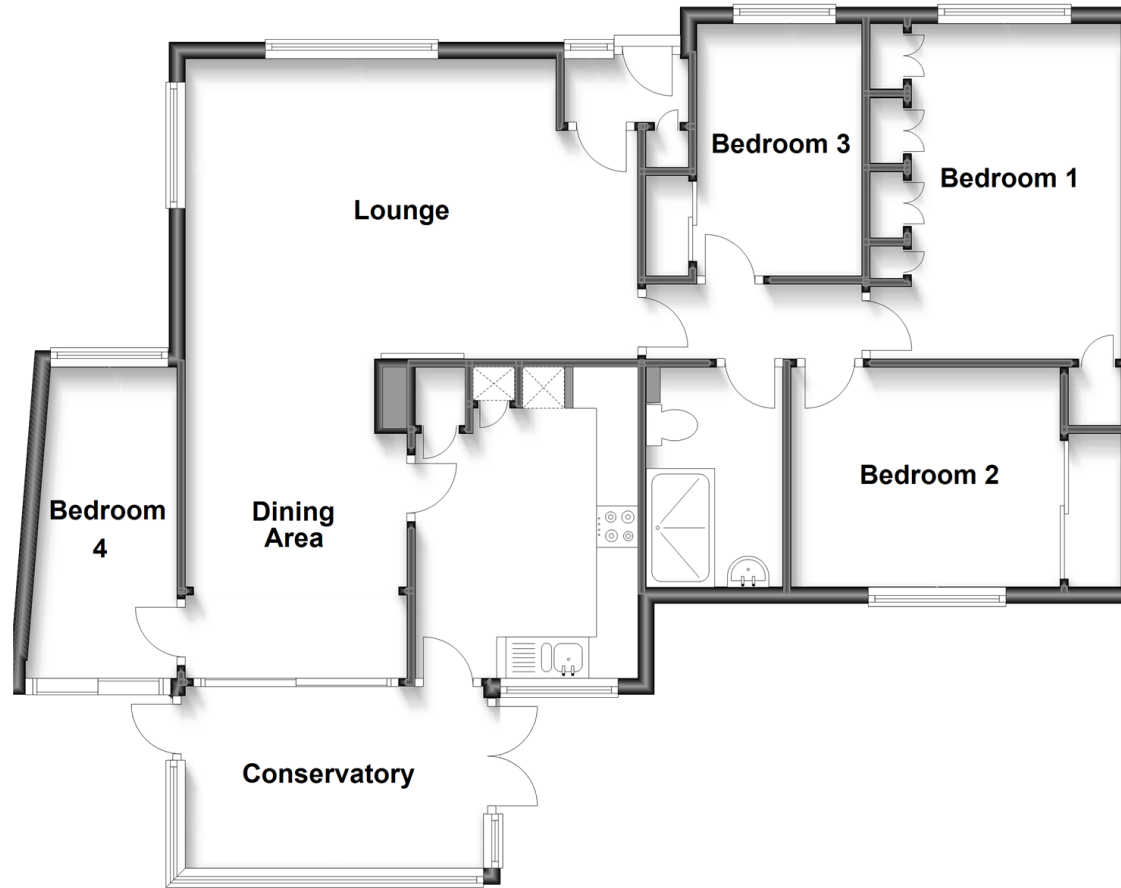
**OVER 60?**

Secure this property  
for up to **59% less!**

*Wards*  
Helping you move forwards

## Ground Floor

Approx. 95.3 sq. metres (1025.5 sq. feet)



## Accommodation

### GROUND FLOOR

Lounge : 17'1 x 11'8 (5.21m x 3.56m)  
Dining Area: 12'6 x 7'4 (3.81m x 2.24m)  
Kitchen : 12'8 x 8'8 (3.86m x 2.64m)  
Conservatory : 12'3 x 7'0 (3.74m x 2.14m)  
Bedroom 4: 12'4 x 5'2 (3.76m x 1.58m)  
Inner Hallway

Bedroom 1 : 13'2 x 9'9 (4.02m x 2.97m)  
Bedroom 2 : 10'6 x 8'3 (3.20m x 2.52m)  
Bedroom 3 : 9'9 x 6'5 (2.97m x 1.96m)  
Shower Room : 8'6 x 5'4 (2.59m x 1.63m)

### OUTSIDE

Front Garden  
Rear Garden  
Shed 1 (With power & light): 9'8 x 7'7 (2.95m x 2.31m)  
Shed 2 (With power & light): 7'9 x 5'9 (2.36m x 1.75m)

Summer House : 10'0 x 10'0 (3.05m x 3.05m)  
Green House : 12'0 x 8'0 (3.66m x 2.44m)  
Garage En-bloc  
Allocated Parking Space



## Main features

- Located in the quiet village of Temple Ewell
- Garage en bloc & off road parking
- Beautiful tiered rear garden
- Set back from the road and separated by the River Dour
- Ideal for commuting with easy access to road links and public transport



### Nearest Schools

Primary Schools: Temple Ewell C of E Primary 0.1 miles, River Primary 0.8 miles, Lydden Primary 1.5 miles  
Secondary Schools: Dover Christchurch Academy 2.1 miles, Dover Grammar School for Girls 2.3 miles, Dover College 2.3 miles.



### Transport Information

Train Stations: Kearsney 0.5 miles, Dover Priory 3.3 miles, Shepherdswell 4.5 miles



### Address

Lower Road, Temple Ewell, Dover, Kent, CT16



### Directions

For directions to this property please contact us.



**Wards**  
Helping you move forwards

Call Dover Branch 01304 214876 ■ [wardsofkent.co.uk](http://wardsofkent.co.uk)



■ Legal advice should be taken to verify fixtures/fittings, planning, alterations and/or lease details ■ Appliances & services are untested, dimensions are approximate and floor plans are not to scale  
■ Through a Homewise Home For Life Plan people aged 60+ can secure this property for up to 59% less, by purchasing a Lifetime Lease.



10730411/20230321/TE/OV