



OVER 60?

Secure this property
for up to **59% less!**

Price

£450,000

Freehold

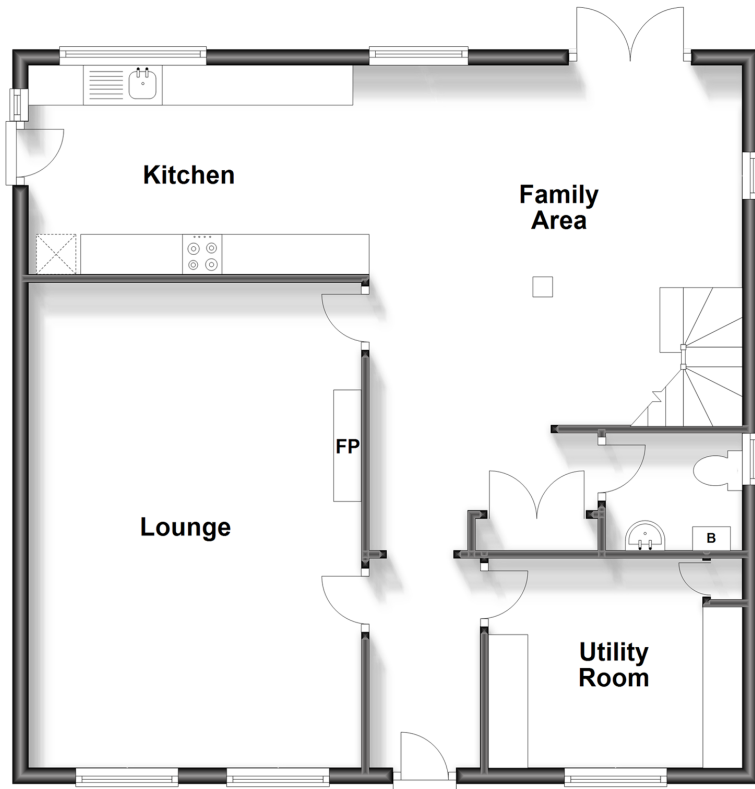
3x  2x  1x 

**Shepherdswell Road,
Eythorne, Dover, Kent,
CT15**

Wards
Helping you move forwards

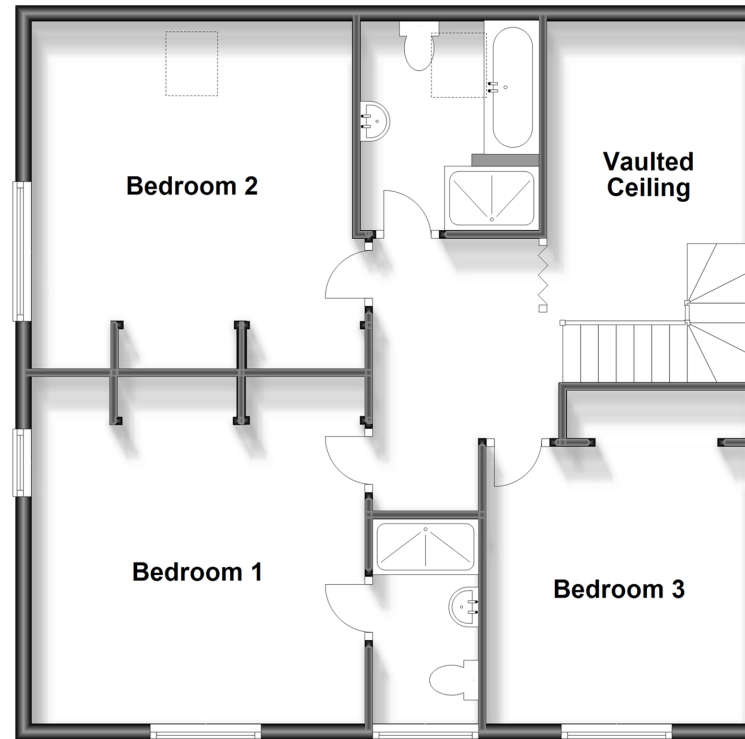
Ground Floor

Approx. 79.7 sq. metres (858.1 sq. feet)



First Floor

Approx. 79.6 sq. metres (857.2 sq. feet)



Accommodation

GROUND FLOOR

Entrance Hallway

Lounge : 19'9 x 13'9 (6.02m x 4.19m)

Utility Room : 10'5 x 8'5 (3.18m x 2.57m)

Downstairs Cloakroom

Family Area: 19'6 x 15'3 (5.95m x 4.65m)

Kitchen : 14'6 x 8'5 (4.42m x 2.57m)

FIRST FLOOR

Landing

Bedroom 3 : 11'4 x 10'5 (3.46m x 3.18m)

Bedroom 1 : 13'7 x 11'9 (4.14m x 3.58m)

En-Suite Shower Room

Bedroom 2: 13'5 x 11'8 (4.09m x 3.56m)

Bathroom : 8'10 x 7'3 (2.69m x 2.21m)

OUTSIDE

Front Garden

Rear Garden

Garage & Off Road Parking



Main features

- Bespoke built beautiful house
- Under floor heating throughout
- Garage & off road parking for 3 cars
- Positioned in the village of Eythorne with easy access to A256 and A2/M2
- The village has a shop and pub so if you are looking for village life, look no further



Nearest Schools

Primary Schools: Eythorne Elvington Community Primary 0.2 miles, Sibertswold C of E Primary at Shepherdswell 1.6 miles, Nonington C of E Primary 2.3 miles
Secondary Schools: Dover Christchurch Academy 3.7 miles, Ripplevale School 4.3 miles.



Transport Information

Train Stations: Shepherdswell 1.6 miles, Kearsney 3.5 miles, Martin Mill 4.3 miles



Address

Shepherdswell Road, Eythorne, Dover, Kent, CT15



Directions

For directions to this property please contact us.



Wards
Helping you move forwards

Call Dover Branch 01304 214876 ■ wardsofkent.co.uk



■ Legal advice should be taken to verify fixtures/fittings, planning, alterations and/or lease details ■ Appliances & services are untested, dimensions are approximate and floor plans are not to scale
■ Through a Homewise Home For Life Plan people aged 60+ can secure this property for up to 59% less, by purchasing a Lifetime Lease.



10730751/20230813/TE/OV