



Guide Price
£600,000

Freehold

3x  1x  1x 

**Hollands Hill, Martin Mill,
Dover, Kent, CT15**

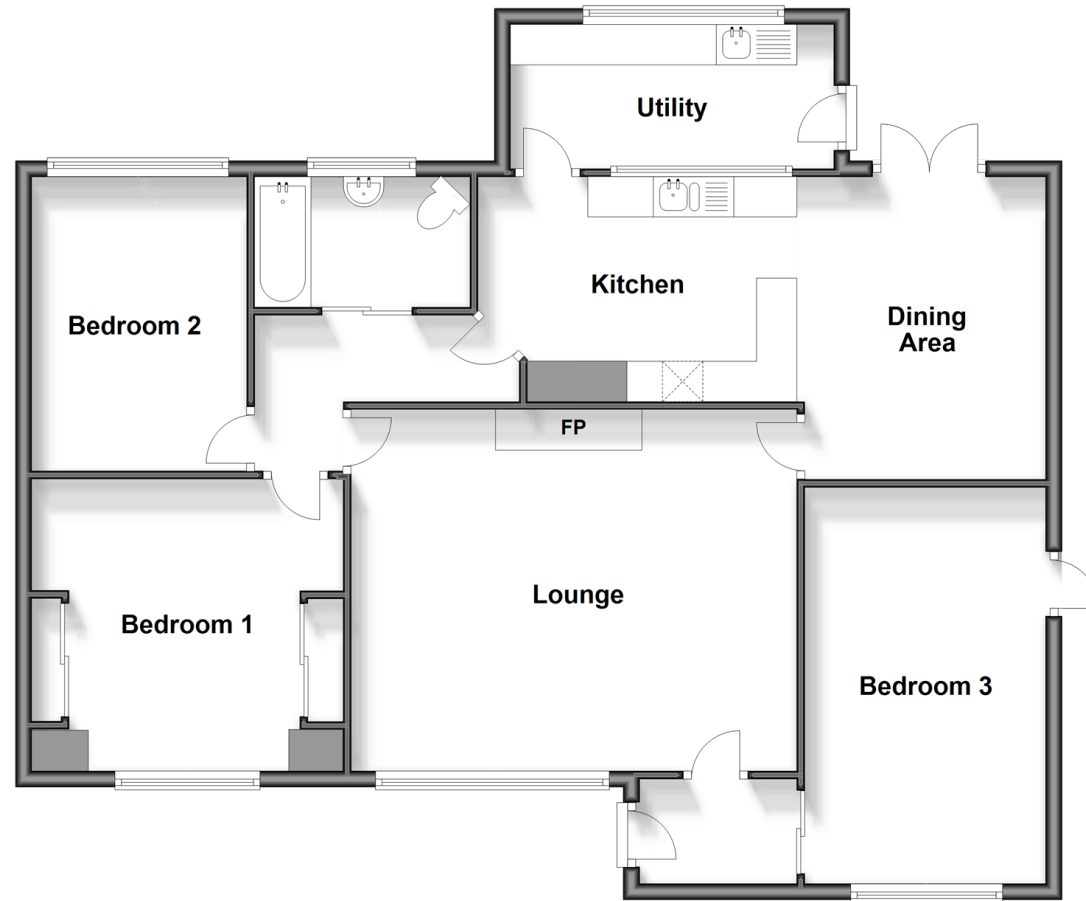
OVER 60?

Secure this property
for up to **59% less!**

Wards
Helping you move forwards

Ground Floor

Approx. 107.3 sq. metres (1155.3 sq. feet)



Accommodation

GROUND FLOOR

Entrance Hall

Lounge : 18'11 x 14'0 (5.77m x 4.27m)

Bedroom 3: 15'9 x 9'7 (4.80m x 2.92m)

Dining Area : 12'3 x 9'7 (3.74m x 2.92m)

Kitchen : 12'8 x 9'1 (3.86m x 2.77m)

Utility : 14'1 x 6'5 (4.30m x 1.96m)

Bathroom : 8'6 x 5'4 (2.59m x 1.63m)

Bedroom 2: 12'3 x 9'3 (3.74m x 2.82m)

Bedroom 1: 12'4 x 10'8 (3.76m x 3.25m)

OUTSIDE

Front Garden

Rear Garden

Off Road Parking

Shed

Wendy House

Summer House

Garden Pond

Green Houses



Main features

- **Stunning rural setting**
- **Easy access to Dover, Whitfield and Deal town**
- **Martin Mill railway station has high speed rail link to London**
- **Ample off road parking for when friends and family come to visit**
- **Set within 1.809 acres of ground, ideal space if you want to extend your home**



Nearest Schools

Primary Schools: Langdon Primary 0.3 miles, St Margaret's-at-Cliffe Primary 1.9 miles, Guston C of E Primary 2.3 miles
Secondary: Learning Opportunities Centre Secondary 1.7 miles, Duke of York's Royal Military School 1.9 miles.



Transport Information

Train Stations: Martin Mill 0.2 miles, Walmer 2.8 miles, Kearsney 3.4 miles



Address

Hollands Hill, Martin Mill, Dover, Kent, CT15



Directions

For directions to this property please contact us.



Call Dover Branch 01304 214876 ■ wardsofkent.co.uk



■ Legal advice should be taken to verify fixtures/fittings, planning, alterations and/or lease details ■ Appliances & services are untested, dimensions are approximate and floor plans are not to scale
■ Through a Homewise Home For Life Plan people aged 60+ can secure this property for up to 59% less, by purchasing a Lifetime Lease.



10730767/20240409/GM/OV