



OVER 60?

Secure this property
for up to **59% less!**

Price

£230,000

Freehold

3x  1x  1x 

**Goschen Road, Dover,
Kent, CT17**

Wards
Helping you move forwards



Main features

- Beautifully presented throughout and ready to move into
- Easy to manage low maintenance rear garden
- Short walk to local amenities
- Dover has great motorway access
- Close to Dover Priory railway station with its high speed links to London

Accommodation

GROUND FLOOR

Lounge : 13'2 x 10'9 (4.02m x 3.28m)

Kitchen: 13'7 x 11'4 (4.14m x 3.46m)

Utility Area

Bathroom

FIRST FLOOR

Landing

Bedroom 1 : 13'5 x 11'7 (4.09m x 3.53m)

Bedroom 3 : 11'1 x 9'6 (3.38m x 2.90m)

Bedroom 2 : 12'2 x 8'4 (3.71m x 2.54m)

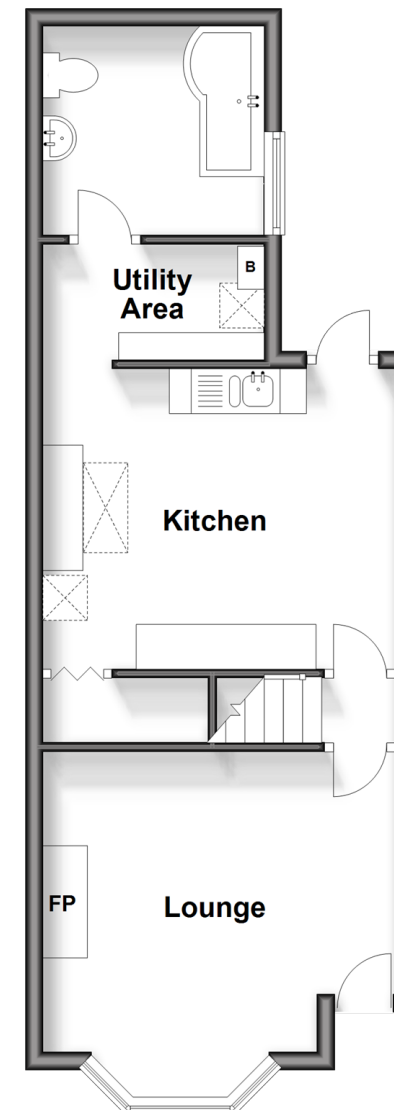
OUTSIDE

Front Garden

Rear Garden

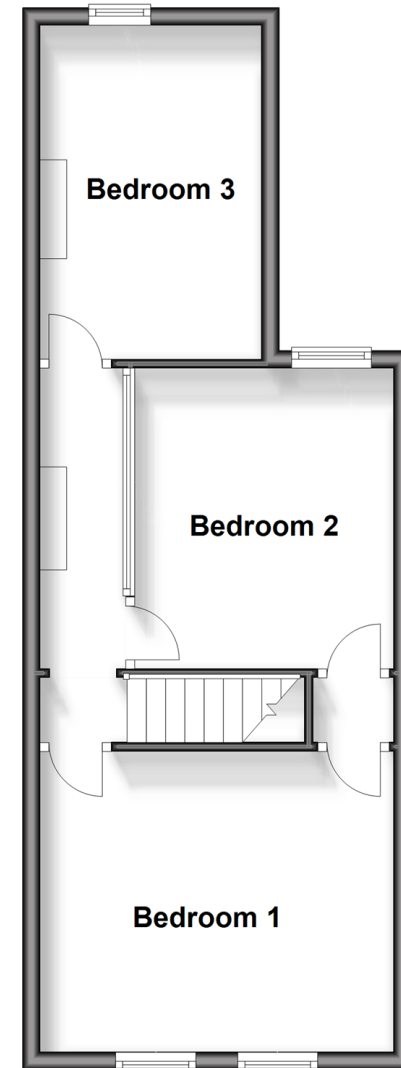
Ground Floor

Approx. 39.5 sq. metres (424.7 sq. feet)



First Floor

Approx. 39.8 sq. metres (428.0 sq. feet)



Call Dover - 01304 214876 ■ wardsofKent.co.uk

- Legal advice should be taken to verify fixtures/fittings, planning, alterations and/or lease details
- Appliances & services are untested, dimensions are approximate and floor plans are not to scale
- Through a Homewise Home For Life Plan people aged 60+ can secure this property for up to 59% less, by purchasing a Lifetime Lease.



10731154/20240423/SB/OV