



**Price**

**£180,000**

**Commonhold**

2x  2x  1x 

**High Street, Dover,  
Kent, CT16**

*Wards*  
Helping you move forwards





## Main features

- Stunning duplex apartment
- Kitchen with fully integrated appliances
- No onward chain complications
- In the heart of Dover town, only a short walk from shops, cafés and on a bus route
- Grade II listed building within the conservation area of Dover

## Accommodation

### FIRST FLOOR

Landing

Lounge/Kitchen: 16'5 x 12'5 (5.01m x 3.79m)

Bedroom 2 : 10'6 x 10'5 (3.20m x 3.18m)

En-Suite Shower Room

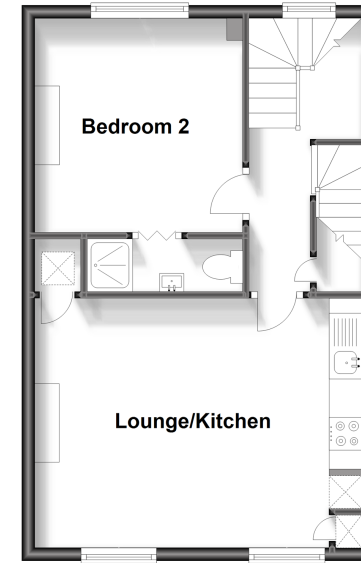
### SECOND FLOOR

Landing

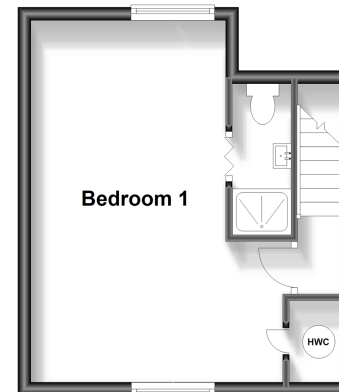
Bedroom 1: 17'8 x 9'7 (5.39m x 2.92m)

En-Suite Shower Room

**First Floor**  
Approx. 40.6 sq. metres (437.4 sq. feet)



**Second Floor**  
Approx. 24.7 sq. metres (266.3 sq. feet)



**Call Dover - 01304 214876 ■ [wardsofkent.co.uk](http://wardsofkent.co.uk)**

- If buying to let, the energy rating will need to be improved to at least 'E' rating before you can let the property
- Legal advice should be taken to verify fixtures/fittings, planning, alterations and/or lease details
- Appliances & services are untested, dimensions are approximate and floor plans are not to scale



10731596/20230908/TE/OV