



Guide Price
£225,000

Freehold

3x  1x  1x 

**Beaconsfield Road,
Dover, Kent, CT16**

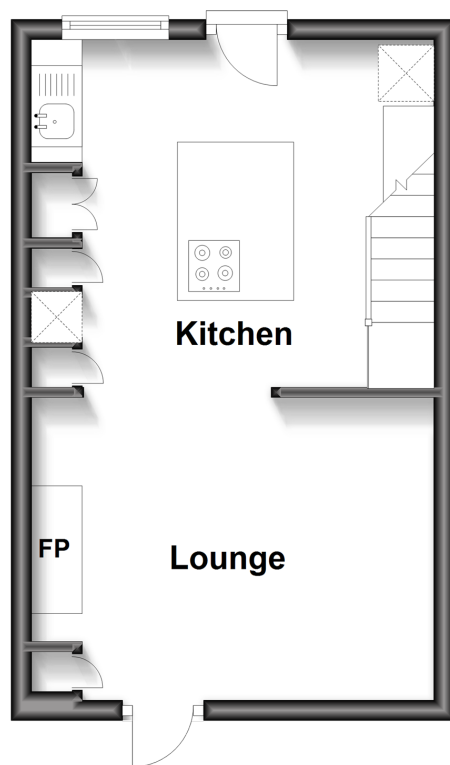
OVER 60?

Secure this property
for up to **59% less!**

Wards
Helping you move forwards

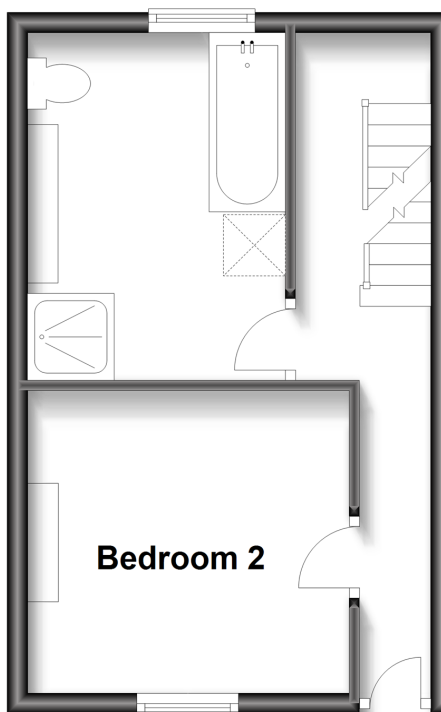
Lower Ground Floor

Approx. 25.6 sq. metres (276.1 sq. feet)



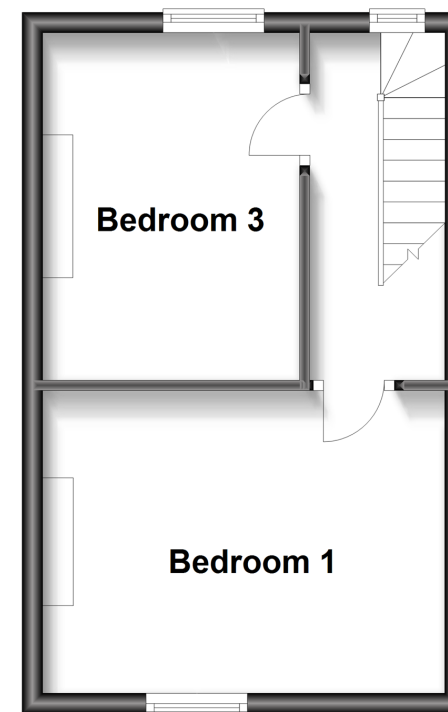
Upper Ground Floor

Approx. 25.6 sq. metres (276.1 sq. feet)



First Floor

Approx. 25.6 sq. metres (276.1 sq. feet)



Accommodation

GROUND FLOOR

Entrance Hallway
Bedroom 2 : 11'4 x 8'4 (3.46m x 2.54m)
Bathroom

LOWER GROUND FLOOR

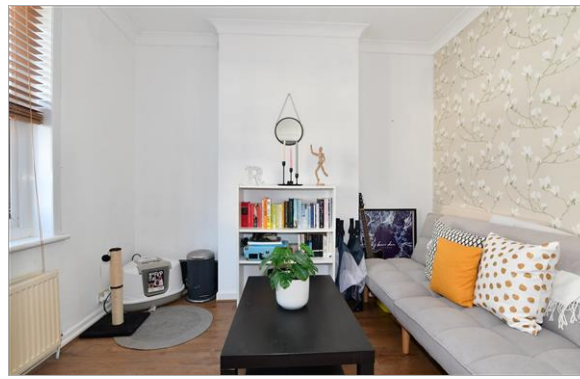
Kitchen : 13'1 x 11'6 (3.99m x 3.51m)
Lounge : 13'1 x 9'8 (3.99m x 2.95m)

UPPER GROUND FLOOR

Landing
Bedroom 1 : 13'9 x 12'7 (4.19m x 3.84m)
Bedroom 3 : 10'4 x 9'10 (3.15m x 3.00m)

OUTSIDE

Front Garden
Rear Garden



Main features

- Charming town house set in the heart of Dover
- Beautiful kitchen/lounge area, perfect for entertaining
- Low maintenance rear garden, perfect for Summer BBQ's
- Close proximity to town & Dover Marina
- Ideal first time buy or buy to let



Nearest Schools

Primary Schools: Barton Junior School 0.1 miles, Charlton C of E Primary 0.1 miles, St Richard's Catholic Primary 0.3 miles
Secondary Schools: Dover Grammar School for Girls 0.1 miles.



Transport Information

Train Stations: Dover Priory 0.4 miles, Kearsney 1.8 miles, Martin Mill 3.2 miles



Address

Beaconsfield Road, Dover, Kent, CT16



Directions

For directions to this property please contact us.



Wards
Helping you move forwards

Call Dover Branch 01304 214876 ■ wardsofkent.co.uk



■ Legal advice should be taken to verify fixtures/fittings, planning, alterations and/or lease details ■ Appliances & services are untested, dimensions are approximate and floor plans are not to scale
■ Through a Homewise Home For Life Plan people aged 60+ can secure this property for up to 59% less, by purchasing a Lifetime Lease.



10732042/20230513/GM/GM