



Price
£160,000

Freehold

2x  1x  1x 

**Primrose Road, Dover,
Kent, CT17**

OVER 60?

Secure this property
for up to **59% less!**

Wards
Helping you move forwards



Main features

- Period house
- Ideal first time purchase or buy to let investment
- Ready to mark with your own stamp
- No onward chain complications, could be making this your home, sooner than you think
- Fantastic transport links close by

Call Dover - 01304 214876 ■ wardsofkent.co.uk

■ Legal advice should be taken to verify fixtures/fittings, planning, alterations and/or lease details
 ■ Through a Homewise Home For Life Plan people aged 60+ can secure this property for up to 59% less, by purchasing a Lifetime Lease.

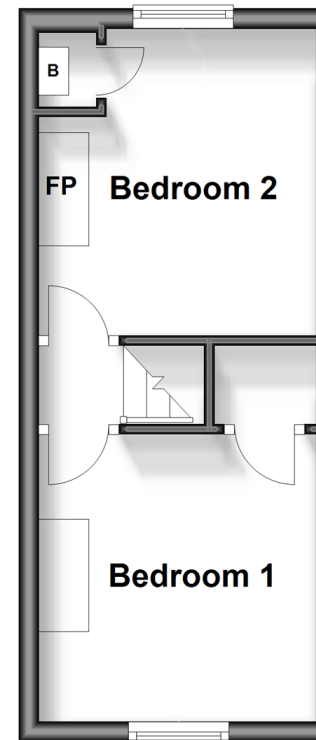
Ground Floor

Approx. 23.1 sq. metres (248.9 sq. feet)



First Floor

Approx. 19.2 sq. metres (206.5 sq. feet)



Accommodation

GROUND FLOOR

Lounge : 10'2 x 9'1 (3.10m x 2.77m)
 Kitchen: 9'11 x 8'9 (3.02m x 2.67m)
 Shower Room

FIRST FLOOR

Landing
 Bedroom 1 : 9'11 x 9'1 (3.02m x 2.77m)
 Bedroom 2 : 10'0 x 9'1 (3.05m x 2.77m)

OUTSIDE

Rear Garden

■ Appliances & services are untested, dimensions are approximate and floor plans are not to scale