



OVER 60?

Secure this property
for up to **59% less!**

Price

£220,000

Freehold

3x  1x  2x 

**Wood Street, Dover,
Kent, CT16**

Wards
Helping you move forwards

Main features

- Central location in the heart of Dover
- Walking distance to shops, schools and Dover Priory railway station with its fast link to London
- Views of Dover Castle
- Large family house spread over 3 floors with rear courtyard garden
- Ideal first time buy or buy to let investment

Accommodation

GROUND FLOOR

Lounge : 12'5 x 11'0 (3.79m x 3.36m)

Dining Room : 12'5 x 11'5 (3.79m x 3.48m)

Kitchen: 11'1 x 5'9 (3.38m x 1.75m)

FIRST FLOOR

Landing

Bedroom 1 : 12'5 x 11'0 (3.79m x 3.36m)

Bathroom : 9'0 x 8'1 (2.75m x 2.47m)

Bedroom 3: 11'1 x 5'8 (3.38m x 1.73m)

SECOND FLOOR

Landing

Bedroom 2: 15'5 x 8'8 (4.70m x 2.64m)

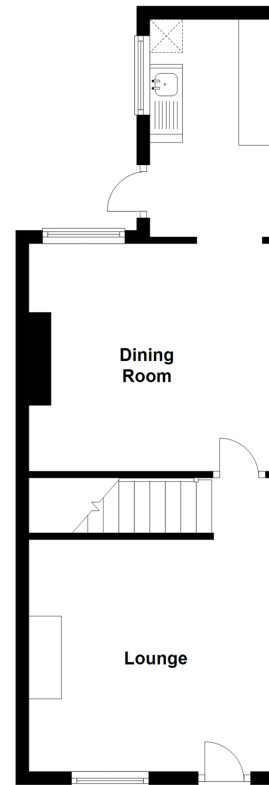
OUTSIDE

Front Garden

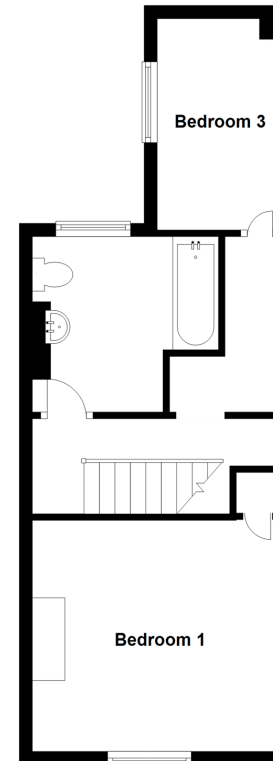
Courtyard Rear Garden

Outside Toilet

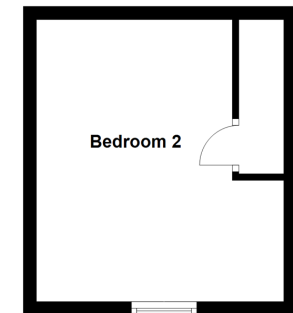
Ground Floor
Approx. 35.9 sq. metres (386.2 sq. feet)



First Floor
Approx. 35.6 sq. metres (382.8 sq. feet)



Second Floor
Approx. 16.1 sq. metres (173.5 sq. feet)



Call Dover - 01304 214876 ■ wardsofkent.co.uk

- If buying to let, the energy rating will need to be improved to at least 'E' rating before you can let the property
- Appliances & services are untested, dimensions are approximate and floor plans are not to scale

- Legal advice should be taken to verify fixtures/fittings, planning, alterations and/or lease details
- Through a Homewise Home For Life Plan people aged 60+ can secure this property for up to 59% less, by purchasing a Lifetime Lease.

