



**Guide Price**  
**£350,000**

**Freehold**

5x  2x  2x 

**Green Close, Whitfield,  
Dover, Kent, CT16**

**OVER 60?**

Secure this property  
for up to **59% less!**

*Wards*  
Helping you move forwards





## Main features

- Large extended end of terrace family house
- Off road parking for 3 cars
- In a quiet cul-de-sac location
- Deceptively spacious, needs to be seen to be fully appreciated
- Whitfield has excellent transport links with easy access to A2/M2 and A20/M20

## Accommodation

### GROUND FLOOR

Entrance Hallway  
Downstairs Cloakroom  
Lounge : 17'9 x 10'9 (5.41m x 3.28m)  
Dining Room : 8'5 x 8'3 (2.57m x 2.52m)  
Kitchen : 13'8 x 8'6 (4.17m x 2.59m)  
Study : 9'3 x 8'7 (2.82m x 2.62m)  
Bedroom 4 : 9'7 x 8'3 (2.92m x 2.52m)

### FIRST FLOOR

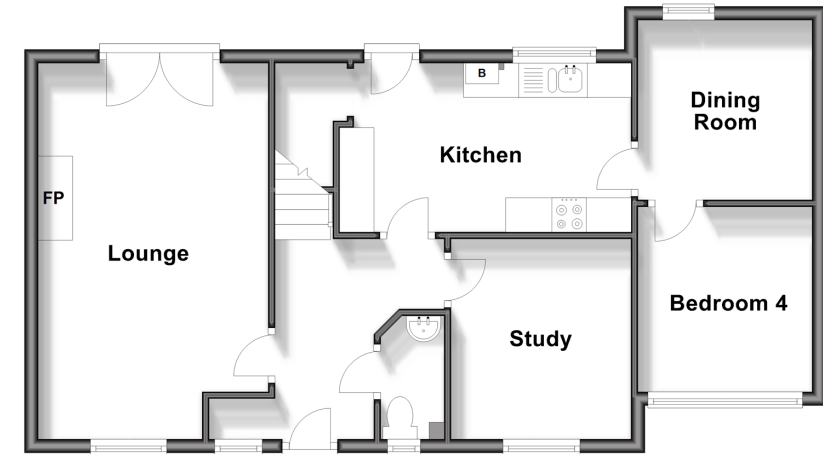
Landing  
Family Bathroom : 6'5 x 6'2 (1.96m x 1.88m)  
Bedroom 1 : 11'6 x 9'9 (3.51m x 2.97m)  
En-Suite Shower Room : 6'5 x 4'1 (1.96m x 1.25m)  
Bedroom 2 : 11'1 x 8'7 (3.38m x 2.62m)  
Bedroom 3 : 11'2 x 6'5 (3.41m x 1.96m)  
Bedroom 5: 9'6 x 6'1 (2.90m x 1.86m)

### OUTSIDE

Front Garden  
Rear Garden  
Off Road Parking

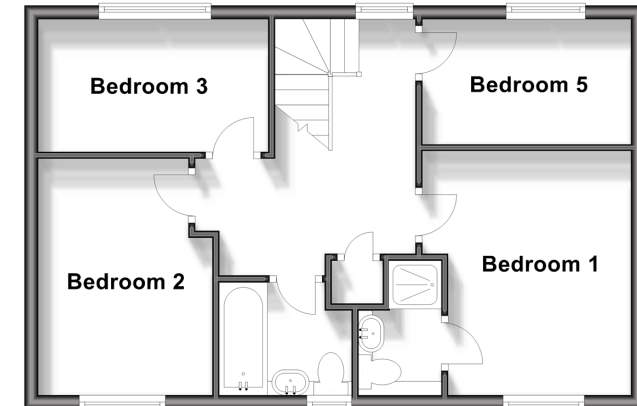
### Ground Floor

Approx. 61.4 sq. metres (660.5 sq. feet)



### First Floor

Approx. 47.2 sq. metres (507.9 sq. feet)



**Call Dover - 01304 214876 ■ [wardsofKent.co.uk](http://wardsofKent.co.uk)**

- Legal advice should be taken to verify fixtures/fittings, planning, alterations and/or lease details
- Appliances & services are untested, dimensions are approximate and floor plans are not to scale
- Through a Homewise Home For Life Plan people aged 60+ can secure this property for up to 59% less, by purchasing a Lifetime Lease.



10732517/20240511/TE/OV