



Guide Price
£180,000

Freehold

2x  1x  1x 

Edgar Road, Dover,
Kent, CT17

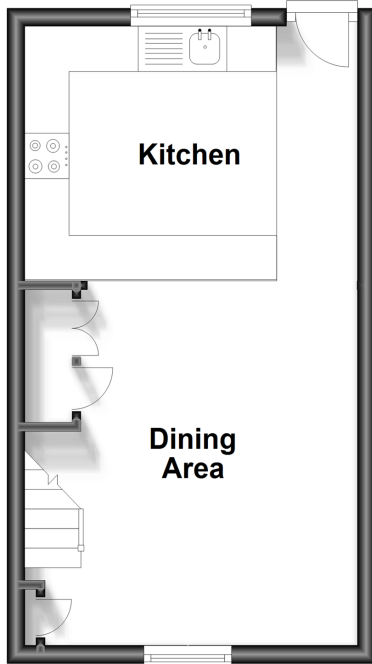
OVER 60?

Secure this property
for up to **59% less!**

Wards
Helping you move forwards

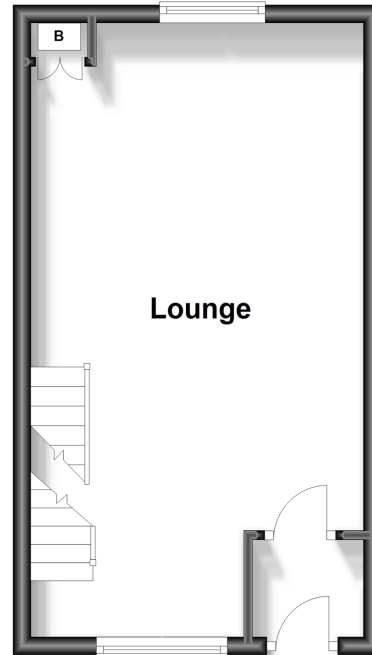
Split Level Lower Ground Floor

Approx. 25.7 sq. metres (276.3 sq. feet)



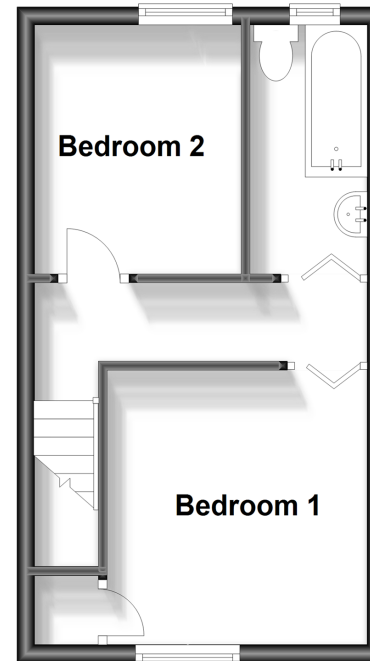
Ground Floor

Approx. 25.5 sq. metres (274.0 sq. feet)



First Floor

Approx. 25.7 sq. metres (276.5 sq. feet)



Accommodation

GROUND FLOOR

Entrance Lobby

Lounge : 22'4 x 11'10 (6.81m x 3.61m)

SPLIT LEVEL LOWER GROUND FL

Dining Area: 21'4 x 11'10 (6.51m x 3.61m)

Kitchen: 12'1 x 8'8 (3.69m x 2.64m)

FIRST FLOOR

Landing

Bedroom 1: 9'2 x 9'2 (2.80m x 2.80m)

Bedroom 2: 9'2 x 7'10 (2.80m x 2.39m)

Bathroom : 9'3 x 4'0 (2.82m x 1.22m)

OUTSIDE

Rear Garden



Main features

- Charming cottage over 3 floors
- Enclosed sun trap rear garden
- Property has a new roof guarantee from March 2024
- Ideal first time buy or buy to let investment
- Close to town centre with its shops and cafes and local schools
- Great access to Dover Priory train station
- Flexible accommodation



Nearest Schools

Primary Schools: White Cliffs Primary College for the Arts 0.5 miles, Barton Junior School 0.9 miles, Dover, St Mary's C of E Primary 0.9 miles
Secondary Schools: Dover Grammar School for Girls 1.1 miles, St Edmund's Catholic School 1.2 miles.



Transport Information

Train Stations: Kearsney 1.8 miles, Dover Priory 2.1 miles, Martin Mill 5.0 miles



Address

Edgar Road, Dover, Kent, CT17



Directions

For directions to this property please contact us.





Call Dover Branch 01304 214876 ■ wardsofkent.co.uk



- Legal advice should be taken to verify fixtures/fittings, planning, alterations and/or lease details
- Appliances & services are untested, dimensions are approximate and floor plans are not to scale
- Through a Homewise Home For Life Plan people aged 60+ can secure this property for up to 59% less, by purchasing a Lifetime Lease.



10732699/20240430/TE/GM