



Guide Price
£400,000

Freehold

3x  2x  1x 

**Downs Close, East
Studdal, Dover, Kent,
CT15**

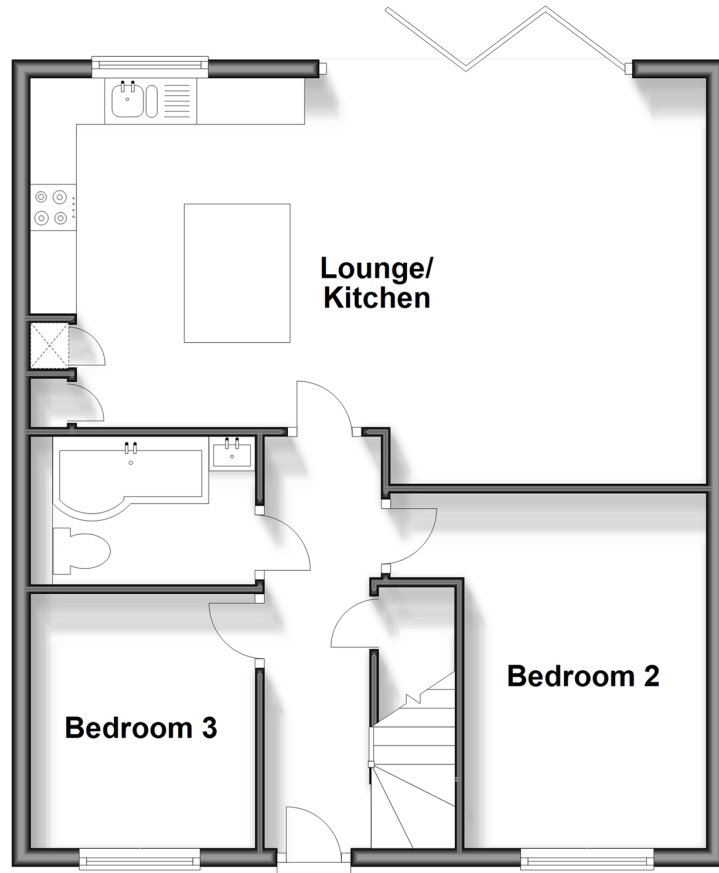
OVER 60?

Secure this property
for up to **59% less!**

Wards
Helping you move forwards

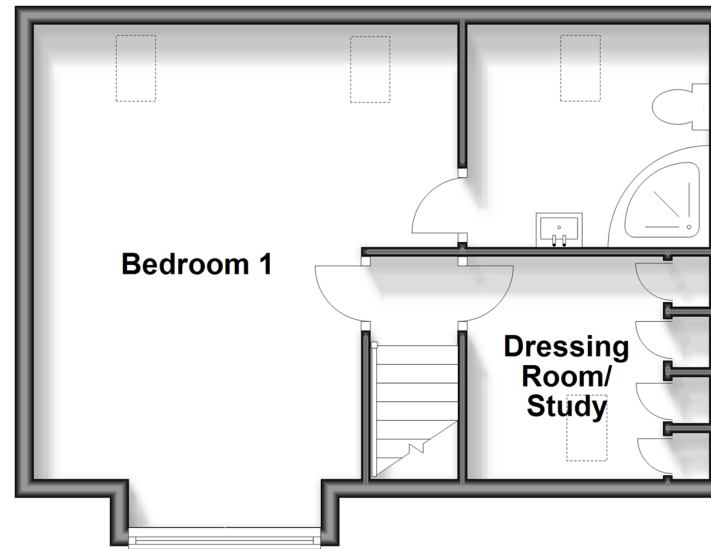
Ground Floor

Approx. 61.1 sq. metres (657.6 sq. feet)



First Floor

Approx. 37.2 sq. metres (400.3 sq. feet)



Accommodation

GROUND FLOOR

Entrance Hallway
Bedroom 3 : 8'9 x 8'0 (2.67m x 2.44m)
Bedroom 2 : 12'7 x 8'5 (3.84m x 2.57m)
Bathroom
Lounge/Kitchen: 24'0 x 14'4 (7.32m x 4.37m)

FIRST FLOOR

Landing
Bedroom 1 : 18'2 x 15'1 (5.54m x 4.60m)
En-Suite Shower Room
Dressing Room/Study: 7'11 x 6'4 (2.41m x 1.93m)

OUTSIDE

Front Garden
Rear Garden
Off Road Parking



Main features

- Sought after village location of East Studdal
- Beautifully presented house with main bathroom & en-suite shower room
- Off road parking for 2 vehicles
- Great access to Deal & Dover towns
- Large enclosed rear garden, perfect for children or pets



Nearest Schools

Primary Schools: Northbourne C of E Primary 2.4 miles, Warden House Primary 3.1 miles, Eythorne Elvington Community Primary 3.2 miles
Secondary Schools: Ripplevale School 2.4 miles, Duke of York's Royal Military School 3.8 miles.



Transport Information

Train Stations: Martin Mill 3.9 miles, Kearsney 3.9 miles, Walmer 4.3 miles



Address

Downs Close, East Studdal, Dover, Kent, CT15



Directions

For directions to this property please contact us.



Wards
Helping you move forwards

Call Dover Branch 01304 214876 ■ wardsofkent.co.uk



■ Legal advice should be taken to verify fixtures/fittings, planning, alterations and/or lease details ■ Appliances & services are untested, dimensions are approximate and floor plans are not to scale
■ Through a Homewise Home For Life Plan people aged 60+ can secure this property for up to 59% less, by purchasing a Lifetime Lease.



10732740/20240403/SB/GM