



**OVER 60?**

Secure this property  
for up to **59% less!**

**Guide Price**  
**£215,000**

**Freehold**

2x  1x  1x 

**Douglas Road, Dover,**  
**Kent, CT17**

*Wards*  
Helping you move forwards





## Main features

- Beautifully presented, ideal first time buy or buy to let investment
- Ready to move in & not lift a finger, turn-key condition
- Popular Tower Hamlets area
- Close to Dover town, shops & schools as well as park
- Dover has a high-speed rail link to London

## Accommodation

### GROUND FLOOR

Entrance Hallway

Lounge : 11'8 x 10'2 (3.56m x 3.10m)

Dining Area: 10'6 x 10'5 (3.20m x 3.18m)

Kitchen: 10'5 x 7'3 (3.18m x 2.21m)

### FIRST FLOOR

Landing

Bathroom

Bedroom 1 : 12'11 x 9'11 (3.94m x 3.02m)

Bedroom 2 : 10'6 x 8'3 (3.20m x 2.52m)

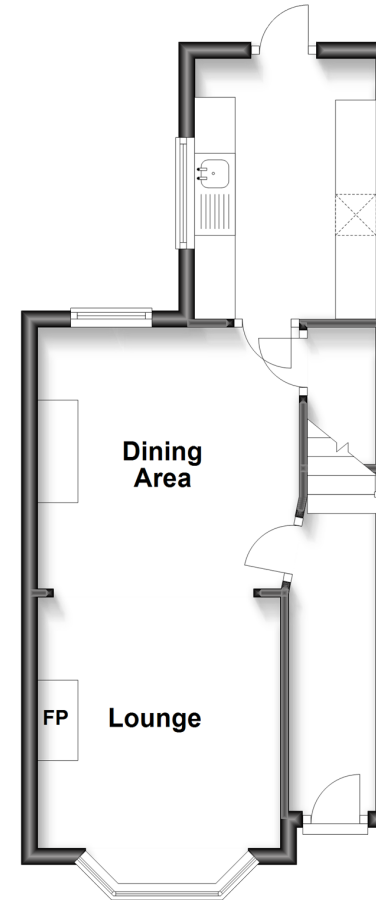
### OUTSIDE

Front Garden

Rear Garden

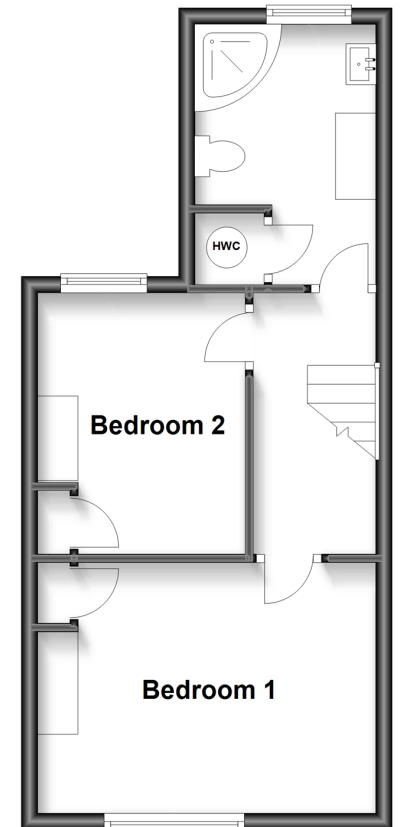
### Ground Floor

Approx. 33.6 sq. metres (361.2 sq. feet)



### First Floor

Approx. 33.8 sq. metres (364.2 sq. feet)



**Call Dover - 01304 214876 ■ [wardsofkent.co.uk](http://wardsofkent.co.uk)**

- Legal advice should be taken to verify fixtures/fittings, planning, alterations and/or lease details
- Appliances & services are untested, dimensions are approximate and floor plans are not to scale
- Through a Homewise Home For Life Plan people aged 60+ can secure this property for up to 59% less, by purchasing a Lifetime Lease.



10733848/20230202/OV/OV