



Price

£150,000

Leasehold

2x  1x  1x 

**Godwyne Close, Dover,
Kent, CT16**

OVER 60?

Secure this property
for up to **59% less!**



Video Tour available

Wards

Helping you move forwards



Main features

- Large purpose built ground floor flat
- Central location close to town
- Separate kitchen & lounge
- Needs to be seen to be appreciated
- Well presented throughout & ready to move into

Accommodation

GROUND FLOOR

Kitchen : 14'2 x 8'5 (4.32m x 2.57m)

Lounge : 15'11 x 12'6 (4.85m x 3.81m)

Bedroom 1: 12'6 x 11'4 (3.81m x 3.46m)

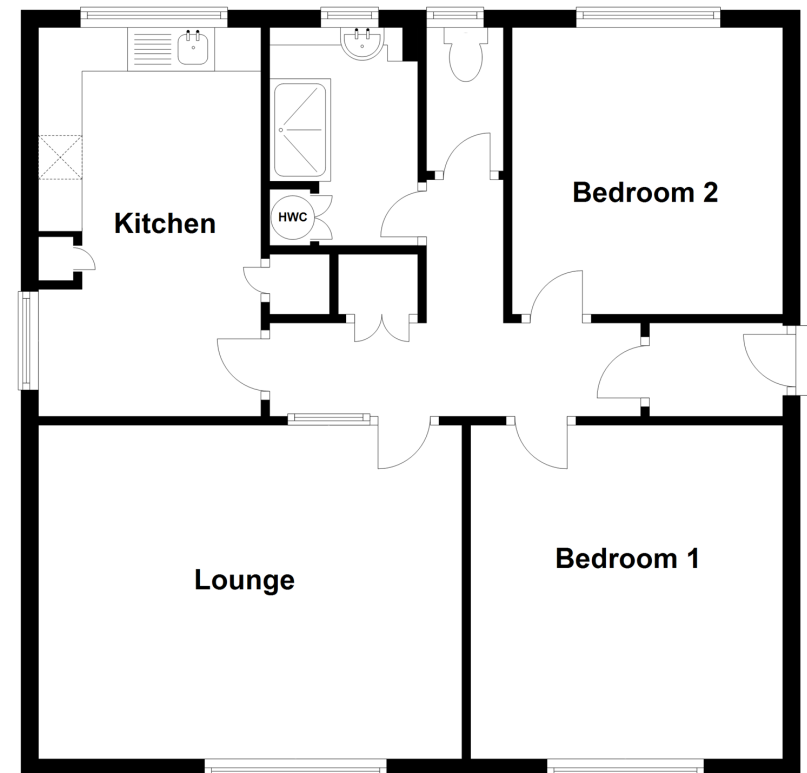
Bedroom 2 : 10'8 x 10'1 (3.25m x 3.08m)

Shower Room : 8'3 x 5'6 (2.52m x 1.68m)

Toilet

Ground Floor

Approx. 71.4 sq. metres (769.0 sq. feet)



Call Dover - 01304 214876 ■ wardsofkent.co.uk

- If buying to let, the energy rating will need to be improved to at least 'E' rating before you can let the property
- Legal advice should be taken to verify fixtures/fittings, planning, alterations and/or lease details
- Appliances & services are untested, dimensions are approximate and floor plans are not to scale
- Through a Homewise Home For Life Plan people aged 60+ can secure this property for up to 59% less, by purchasing a Lifetime Lease.

