



**Guide Price**  
**£325,000**

**Freehold**

3x  1x  2x 

**Stonehall Road, Lydden,  
Dover, Kent, CT15**

**OVER 60?**

Secure this property  
for up to **59% less!**

*Wards*  
Helping you move forwards





## Main features

- Open plan kitchen & family area, with lots of natural light
- Stunning views of green rolling hills
- Off-Road parking for 2 cars
- Large bedroom with the addition of a dressing area
- Lydden has easy access via the A2 to Folkestone, Canterbury and Dover towns

## Accommodation

### GROUND FLOOR

Entrance Lobby  
 Family Area : 12'1 x 8'8 (3.69m x 2.64m)  
 Downstairs Cloakroom  
 Kitchen : 14'0 x 11'7 (4.27m x 3.53m)  
 Lounge : 16'4 x 10'9 (4.98m x 3.28m)

### FIRST FLOOR

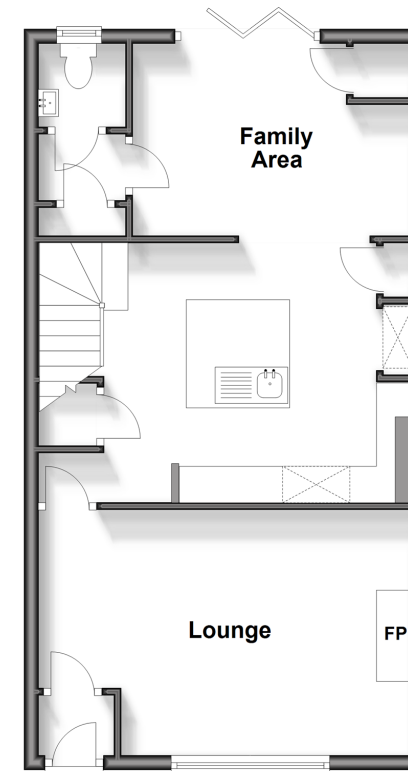
Landing  
 Bedroom 1 : 20'9 x 10'5 (6.33m x 3.18m)  
 Dressing Area  
 Bedroom 2 : 11'8 x 9'6 (3.56m x 2.90m)  
 Bedroom 3 : 11'8 x 6'5 (3.56m x 1.96m)  
 Bathroom

### OUTSIDE

Front Garden  
 Rear Garden  
 Garden Shed  
 Off Road Parking

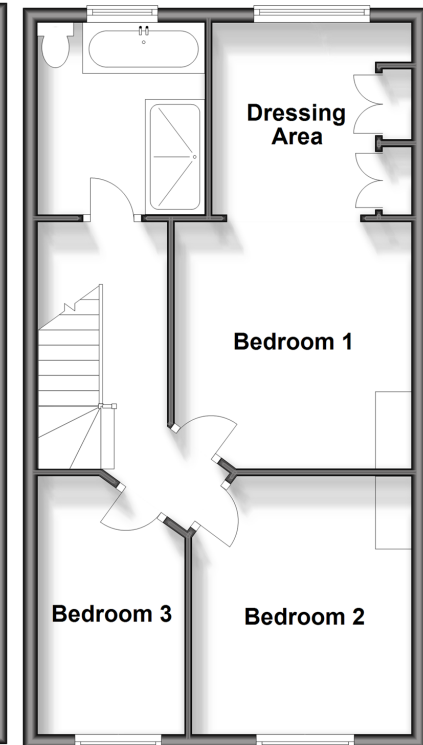
### Ground Floor

Approx. 50.3 sq. metres (541.5 sq. feet)



### First Floor

Approx. 50.3 sq. metres (541.5 sq. feet)



**Call Dover - 01304 214876 ■ [wardsofkent.co.uk](http://wardsofkent.co.uk)**

- Legal advice should be taken to verify fixtures/fittings, planning, alterations and/or lease details
- Appliances & services are untested, dimensions are approximate and floor plans are not to scale
- Through a Homewise Home For Life Plan people aged 60+ can secure this property for up to 59% less, by purchasing a Lifetime Lease.



10733857/20240427/TE/CB