



Price

£65,000

Leasehold

1x  1x  1x 

**The Metropole, New
Street, Dover, Kent,
CT17**



Video Tour available

Wards

Helping you move forwards



Main features

- Third floor town centre apartment
- Lovely views towards Western Heights to the rear
- Tenant in situ, perfect investment opportunity
- Situated in the centre of Dover town
- Close to Dover mainline railway station with its fast link to London



Accommodation

THIRD FLOOR

Entrance Hall

Lounge : 13'11 x 10'8 (4.24m x 3.25m)

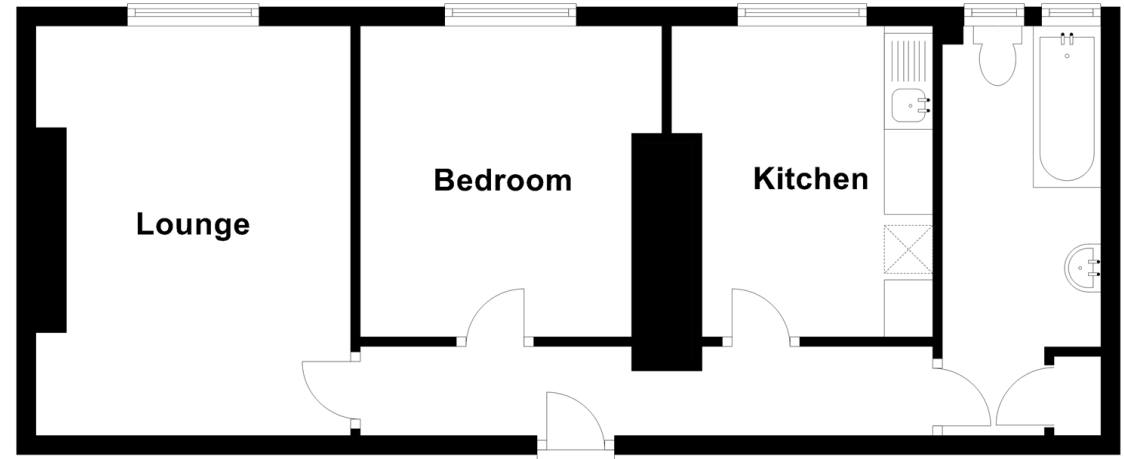
Bedroom : 10'7 x 10'3 (3.23m x 3.13m)

Kitchen/Diner : 10'5 x 8'10 (3.18m x 2.69m)

Bathroom : 13'11 x 5'5 (4.24m x 1.65m)

Third Floor

Approx. 47.0 sq. metres (505.7 sq. feet)



Call Dover - 01304 214876 ■ wardsofkent.co.uk

- Legal advice should be taken to verify fixtures/fittings, planning, alterations and/or lease details
- Appliances & services are untested, dimensions are approximate and floor plans are not to scale



10733896/20230430/TE/BH