



**OVER 60?**

Secure this property  
for up to **59% less!**

**Price**

**£160,000**

**Freehold**

3x  1x  1x 

**Tower Hamlets Road,  
Dover, Kent, CT17**

*Wards*  
Helping you move forwards





## Main features

- Period house over 3 floors
- Ideal first time purchase or buy to let investment
- Ready to mark with your own stamp
- No onward chain complications, could be making this your home, sooner than you think
- Fantastic transport links close by

## Accommodation

### GROUND FLOOR

Lounge : 17'3 x 11'5 (5.26m x 3.48m)

Kitchen : 13'6 x 9'1 (4.12m x 2.77m)

### FIRST FLOOR

Landing

Bedroom 3 : 9'1 x 8'8 (2.77m x 2.64m)

Bathroom: 11'3 x 7'2 (3.43m x 2.19m)

### SECOND FLOOR

Landing

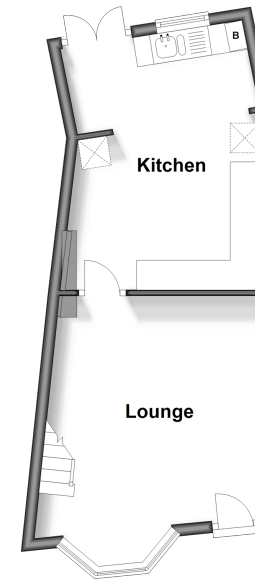
Bedroom 1 : 10'11 x 9'8 (3.33m x 2.95m)

Bedroom 2 : 11'2 x 9'8 (3.41m x 2.95m)

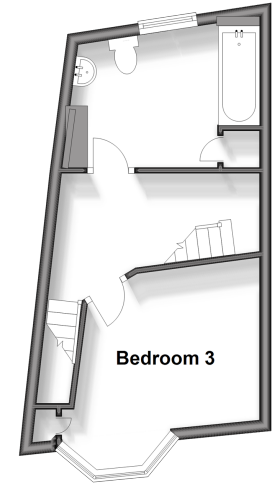
### OUTSIDE

Rear Garden

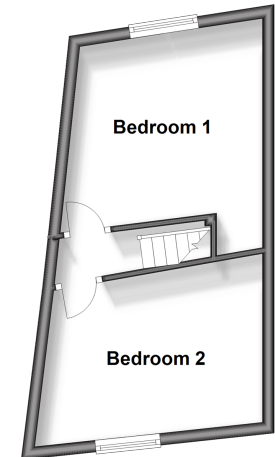
**Ground Floor**  
Approx. 28.5 sq. metres (306.3 sq. feet)



**First Floor**  
Approx. 23.7 sq. metres (254.7 sq. feet)



**Second Floor**  
Approx. 23.4 sq. metres (252.2 sq. feet)



**Call Dover - 01304 214876 ■ [wardsofkent.co.uk](http://wardsofkent.co.uk)**

- Legal advice should be taken to verify fixtures/fittings, planning, alterations and/or lease details
- Appliances & services are untested, dimensions are approximate and floor plans are not to scale
- Through a Homewise Home For Life Plan people aged 60+ can secure this property for up to 59% less, by purchasing a Lifetime Lease.



10733929/20231201/OV/OV