

**OVER 60?**

Secure this property  
for up to **59% less!**



Virtual Reality Tour available

**Guide Price**  
**£260,000**  
**Leasehold**

2x  1x  1x 

The Gateway, Dover, Kent, CT16

*Wards*  
Helping you move forwards



## Main features

- Immaculate second floor apartment with lift access and breathtaking views
- A real turnkey home
- Close proximity to the ever-improving Dover Marina
- Residents parking and a visitors pass
- Service charge includes hot water and heating

## Accommodation

### SECOND FLOOR

Entrance Hall

Kitchen: 15'5 x 9'6 (4.70m x 2.90m)

Lounge : 19'4 x 12'7 (5.90m x 3.84m)

Dining Area: 9'5 x 8'5 (2.87m x 2.57m)

Balcony

Bedroom 1 : 12'9 x 12'6 (3.89m x 3.81m)

Bedroom 2 : 11'1 x 8'10 (3.38m x 2.69m)

Shower Room

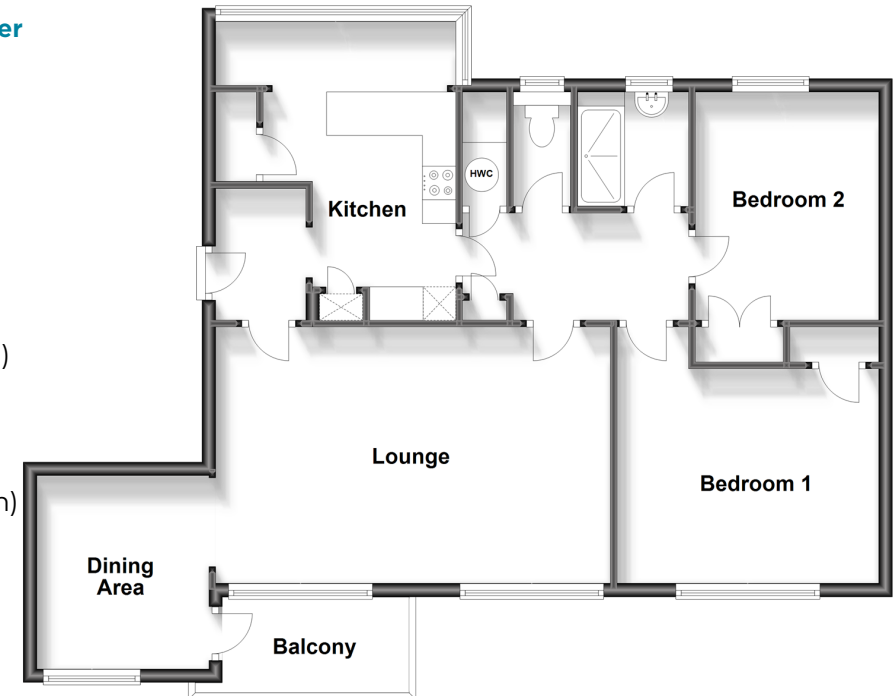
Separate Toilet

### OUTSIDE

Residents Parking

### Second Floor

Approx. 84.0 sq. metres (904.5 sq. feet)



**Call Dover - 01304 214876 ■ [wardsofKent.co.uk](http://wardsofKent.co.uk)**

- Legal advice should be taken to verify fixtures/fittings, planning, alterations and/or lease details
- Appliances & services are untested, dimensions are approximate and floor plans are not to scale
- Through a Homewise Home For Life Plan people aged 60+ can secure this property for up to 59% less, by purchasing a Lifetime Lease.



10734032/20231109/TE/GM