



**OVER 60?**

Secure this property  
for up to **59% less!**

**Price**

**£210,000**

**Freehold**

2x  1x  1x 

**Kimberley Close, Dover,  
Kent, CT16**

*Wards*  
Helping you move forwards





## Main features

- Ideal first time buy or buy to let
- Ready to move into and enjoy all that Dover has to offer
- Fantastic access to A20 and M20
- No onward chain complications meaning you can make this your own sooner than you would think
- Stunning views across Dover from the elevated position

## Accommodation

### GROUND FLOOR

Entrance Hallway

Kitchen: 9'6 x 9'2 (2.90m x 2.80m)

Dining Area : 11'6 x 7'5 (3.51m x 2.26m)

Lounge : 12'3 x 11'5 (3.74m x 3.48m)

### FIRST FLOOR

Landing

Wet Room : 7'9 x 5'5 (2.36m x 1.65m)

Bedroom 1: 17'8 x 10'6 (5.39m x 3.20m)

Bedroom 2: 13'7 x 9'6 (4.14m x 2.90m)

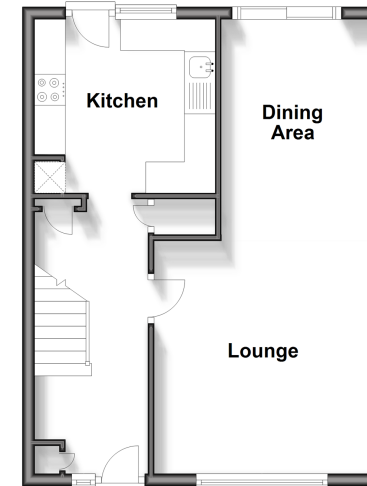
### OUTSIDE

Front Garden

Rear Garden

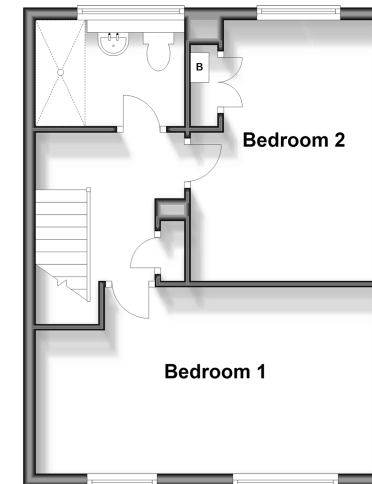
### Ground Floor

Approx. 40.3 sq. metres (434.3 sq. feet)



### First Floor

Approx. 40.3 sq. metres (434.3 sq. feet)



**Call Dover - 01304 214876 ■ [wardsofKent.co.uk](http://wardsofKent.co.uk)**

- Legal advice should be taken to verify fixtures/fittings, planning, alterations and/or lease details
- Appliances & services are untested, dimensions are approximate and floor plans are not to scale
- Through a Homewise Home For Life Plan people aged 60+ can secure this property for up to 59% less, by purchasing a Lifetime Lease.



10734123/20240330/TE/OV