



Price
£350,000

Freehold

2x  1x  1x 

**Westdean Close, Dover,
Kent, CT17**

OVER 60?

Secure this property
for up to **59% less!**



Video Tour available

Wards
Helping you move forwards



Main features

- Recently refurbished, located in a quiet cul-de-sac
- Highly sought-after location in River
- Fantastic views across River
- Garage & off-road parking
- Fantastic location with easy access to A2/M2, A20/M20 and fast rail links via Dover Priory railway station to Canterbury, Ashford & London

Accommodation

GROUND FLOOR

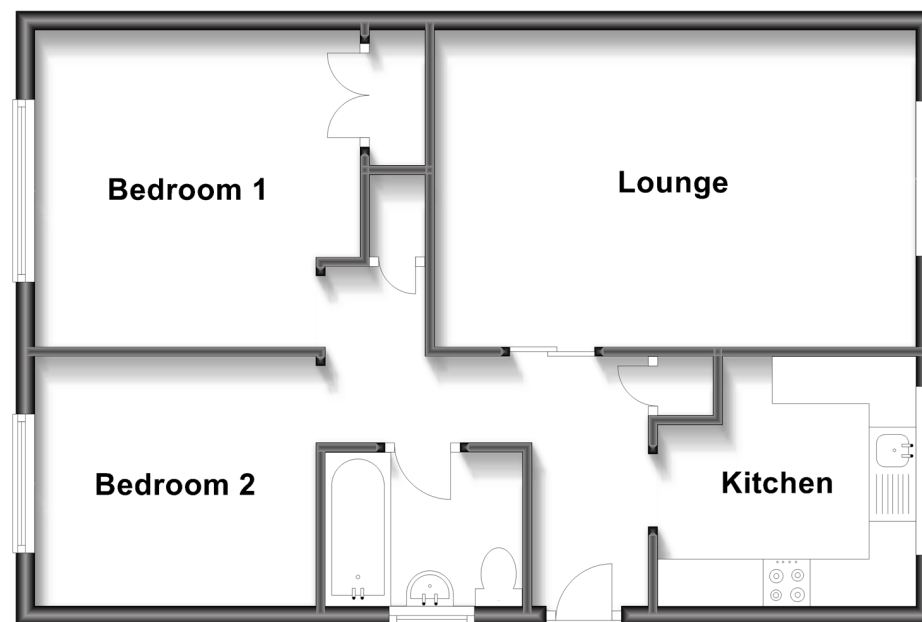
Entrance Hallway
 Kitchen : 9'0 x 8'5 (2.75m x 2.57m)
 Lounge : 16'9 x 11'1 (5.11m x 3.38m)
 Bathroom : 6'8 x 5'8 (2.03m x 1.73m)
 Bedroom 1 : 11'4 x 11'1 (3.46m x 3.38m)
 Bedroom 2 : 11'4 x 8'5 (3.46m x 2.57m)

OUTSIDE

Front Garden
 Rear Garden
 Garage & Off Road Parking

Ground Floor

Approx. 57.5 sq. metres (619.0 sq. feet)



Call Dover - 01304 214876 ■ wardsofkent.co.uk

■ Legal advice should be taken to verify fixtures/fittings, planning, alterations and/or lease details
 ■ Through a Homewise Home For Life Plan people aged 60+ can secure this property for up to 59% less, by purchasing a Lifetime Lease.

■ Appliances & services are untested, dimensions are approximate and floor plans are not to scale



10734150/20230328/SB/SB