



**OVER 60?**

Secure this property  
for up to **59% less!**

**Guide Price**  
**£350,000**

**Freehold**

3x  1x  1x 

**Cowper Road, River,  
Dover, Kent, CT17**

*Wards*  
Helping you move forwards





## Main features

- Sought after location in the village of River
- Well presented family house
- Close to schools & local shops
- Fantastic transport links via A2 or A20/M20 as well high speed rail links to London via Dover Priory
- Garage & Off Road Parking

## Accommodation

### GROUND FLOOR

Entrance Hallway

Lounge : 18'5 x 11'9 (5.62m x 3.58m)

Kitchen/Diner : 17'9 x 8'6 (5.41m x 2.59m)

Utility Room

Bedroom 1 : 12'7 x 9'6 (3.84m x 2.90m)

Bathroom : 6'3 x 5'8 (1.91m x 1.73m)

Bedroom 2 : 7'9 x 7'5 (2.36m x 2.26m)

Bedroom 3 : 12'9 x 8'7 (3.89m x 2.62m)

### OUTSIDE

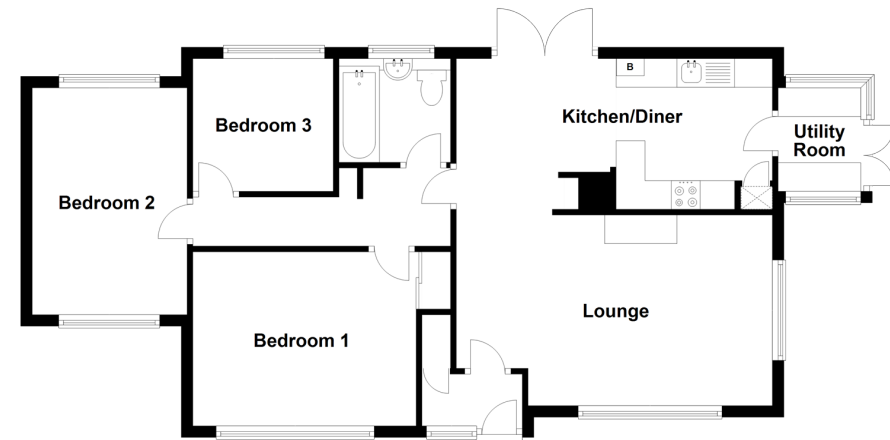
Front Garden

Rear Garden

Garage & Off Road Parking

Summer House

**Ground Floor**  
Approx. 76.6 sq. metres (824.2 sq. feet)



**Call Dover - 01304 214876 ■ [wardsofkent.co.uk](http://wardsofkent.co.uk)**

- Legal advice should be taken to verify fixtures/fittings, planning, alterations and/or lease details
- Appliances & services are untested, dimensions are approximate and floor plans are not to scale
- Through a Homewise Home For Life Plan people aged 60+ can secure this property for up to 59% less, by purchasing a Lifetime Lease.



10734556/20231109/TE/AF