



OVER 60?

Secure this property
for up to **59% less!**

Price

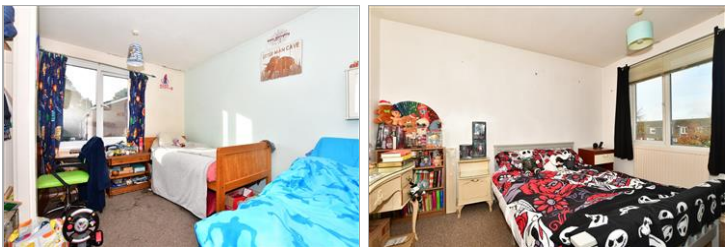
£225,000

Freehold

3x  1x  1x 

**Anzio Crescent, Guston,
Dover, Kent, CT15**

Wards
Helping you move forwards



Main features

- Sought after location of Burgoyne Heights
- Surrounded by large open spaces
- Ideal first time purchase
- Great access to A2/A20/M20 as well as Dover Priory Railway station
- No onward chain complications, move in sooner than you think

Accommodation

GROUND FLOOR

Entrance Hallway
Downstairs Toilet
Kitchen : 13'3 x 11'5 (4.04m x 3.48m)
Lounge : 13'4 x 11'8 (4.07m x 3.56m)

FIRST FLOOR

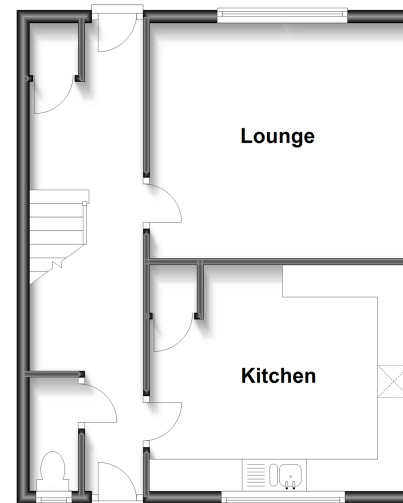
Landing
Bathroom : 6'7 x 5'5 (2.01m x 1.65m)
Bedroom 2 : 11'1 x 10'4 (3.38m x 3.15m)
Bedroom 1 : 11'3 x 10'4 (3.43m x 3.15m)
Bedroom 3 : 9'0 x 8'8 (2.75m x 2.64m)

OUTSIDE

Front Garden
Rear Garden
Allocated Parking Space

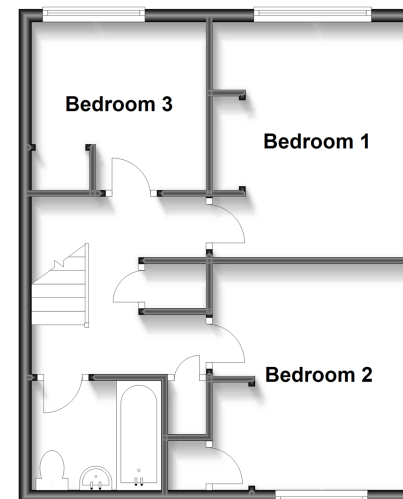
Ground Floor

Approx. 43.3 sq. metres (465.8 sq. feet)



First Floor

Approx. 43.3 sq. metres (465.8 sq. feet)



Call Dover - 01304 214876 ■ wardsofKent.co.uk

- Legal advice should be taken to verify fixtures/fittings, planning, alterations and/or lease details
- Appliances & services are untested, dimensions are approximate and floor plans are not to scale
- Through a Homewise Home For Life Plan people aged 60+ can secure this property for up to 59% less, by purchasing a Lifetime Lease.



10734633/20221220/TE/OV