



OVER 60?

Secure this property
for up to **59% less!**

Price

£400,000

Leasehold

3x  2x  1x 

**Riverside, Mill Race,
River, Dover, Kent, CT17**

Wards
Helping you move forwards



Main features

- Ground floor duplex apartment
- Allocated parking space
- Balcony overlooking the River Dour
- Positioned in the sought-after location of River with a shop & pub, only a short walk away
- Easy access to A256 & A2, as well as Kearsney Railway station

Accommodation

GROUND FLOOR

Entrance Hallway

Lounge/Dining Room : 26'10 x 17'1 (8.18m x 5.21m)

Balcony

Kitchen : 12'6 x 8'11 (3.81m x 2.72m)

Study/Bedroom 3 : 9'10 x 7'10 (3.00m x 2.39m)

Shower Room

FIRST FLOOR

Landing/Study Area

Bedroom 1 : 9'9 x 9'6 (2.97m x 2.90m)

En-Suite Shower Room

Bedroom 2 : 15'2 x 9'6 (4.63m x 2.90m)

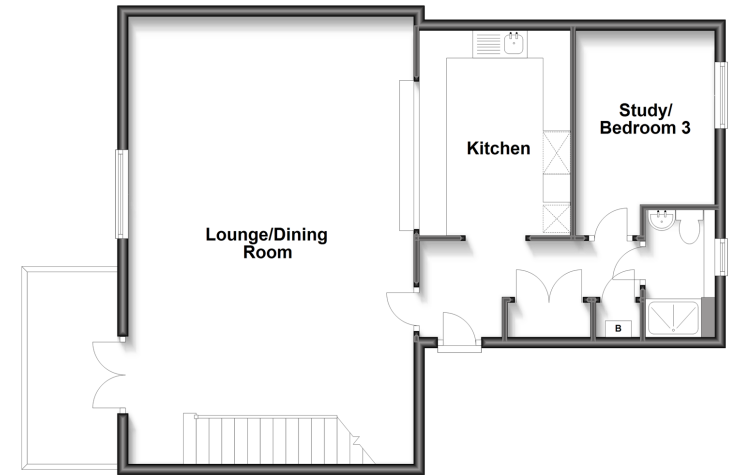
Bathroom

OUTSIDE

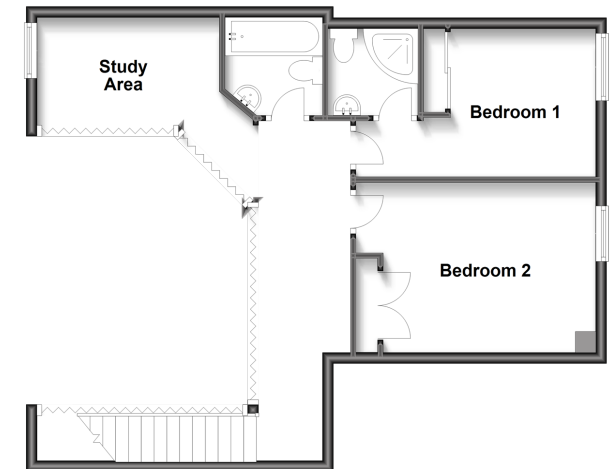
Communal Gardens

Allocated Parking Space

Ground Floor
Approx. 72.9 sq. metres (785.2 sq. feet)



First Floor
Approx. 51.5 sq. metres (554.7 sq. feet)



Call Dover - 01304 214876 ■ wardsofKent.co.uk

- Legal advice should be taken to verify fixtures/fittings, planning, alterations and/or lease details
- Appliances & services are untested, dimensions are approximate and floor plans are not to scale
- Through a Homewise Home For Life Plan people aged 60+ can secure this property for up to 59% less, by purchasing a Lifetime Lease.



10734645/20221206/GM/OV