



Guide Price
£360,000

Freehold

4x  2x  2x 

**Salisbury Road, Dover,
Kent, CT16**

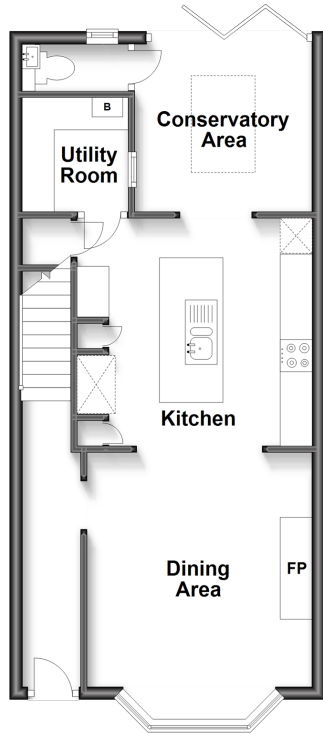
OVER 60?

You could get up to
59% off the price!*

Wards
Helping you move forwards

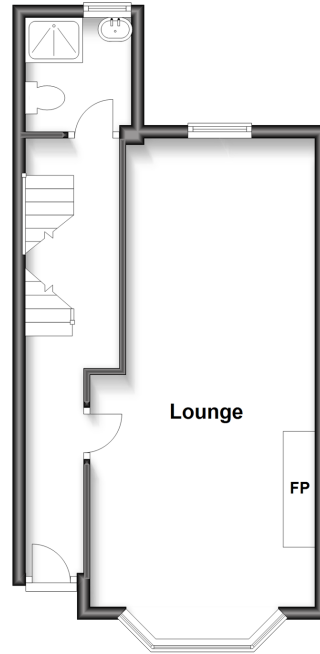
Lower Ground Floor

Approx. 45.7 sq. metres (491.6 sq. feet)



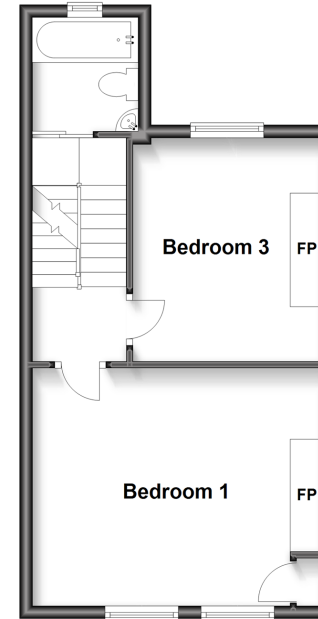
Upper Ground Floor

Approx. 36.0 sq. metres (387.2 sq. feet)



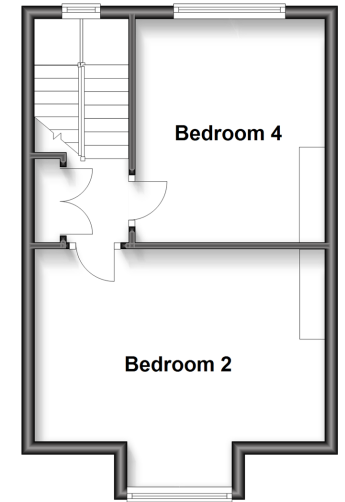
Split Level First Floor

Approx. 36.4 sq. metres (392.0 sq. feet)



Second Floor

Approx. 31.0 sq. metres (333.7 sq. feet)



Accommodation

LOWER GROUND FLOOR

Entrance Hallway

Utility Area: 4'7 x 4'7 (1.40m x 1.40m)

Conservatory To The Rear : 9'1 x 9'0 (2.77m x 2.75m)

Separate Toilet

Kitchen/Dining Area : 27'1 x 10'3 (8.26m x 3.13m)

GROUND FLOOR

Entrance Hallway

Open Plan Living Area : 27'3 x 11'3 (8.31m x 3.43m)

Shower Room: 7'0 x 6'0 (2.14m x 1.83m)

FIRST FLOOR

Landing

Bedroom 1: 13'8 x 12'1 (4.17m x 3.69m)

Bedroom 2: 11'7 x 9'8 (3.53m x 2.95m)

Bathroom : 7'1 x 5'2 (2.16m x 1.58m)

SECOND FLOOR

Landing

Bedroom : 14'8 x 11'6 (4.47m x 3.51m)

Bedroom : 12'4 x 8'5 (3.76m x 2.57m)

OUTSIDE

Front Garden

Rear Garden

Garage



Main features

- Garage to the rear
- Highly sought-after central location of Castle Ward
- A short distance to the local schools & shops
- Sun trap rear garden, perfect for entertaining friends & family
- Fantastic transport links



Nearest Schools

Primary Schools: St Richard's Catholic Primary 0.3 miles, Charlton C of E Primary 0.4 miles, Priory Fields School 0.6 miles
Secondary Schools: Dover Grammar School for Girls 0.4 miles, St Edmund's Catholic School 0.5 miles.



Transport Information

Train Stations: Dover Priory 0.9 miles, Kearsney 2.3 miles, Martin Mill 4.1 miles



Address

Salisbury Road, Dover, Kent, CT16



Directions

For directions to this property please contact us.



Wards
Helping you move forwards

Call Dover Branch 01304 214876 ■ wardsofkent.co.uk



- Legal advice should be taken to verify fixtures/fittings, planning, alterations and/or lease details
- Appliances & services are untested, dimensions are approximate and floor plans are not to scale
- Our Homewise partnership offer a 'Home for Life' plan to buyers over 60, granting a lifetime lease for your protection and reducing the purchase price by up to 59%



10734649/20221008/AF/AF