



Price

£360,000

Freehold

3x  1x  2x 

**London Road, River,
Kent, CT17**

OVER 60?

Secure this property
for up to **59% less!**



Virtual Reality Tour available

Wards

Helping you move forwards



Main features

- Large house with potential
- Large driveway and rear garden
- Chain free and vacant
- Highly sought after location of River with fantastic access to schools and shops
- Brilliant transport links to A2/M2, A20/M20 and high speed rail links to London via Dover Priory

Accommodation

GROUND FLOOR

Entrance Hallway
 Lounge : 14'8 x 13'2 (4.47m x 4.02m)
 Kitchen : 15'3 x 9'9 (4.65m x 2.97m)
 Dining Room : 15'4 x 14'1 (4.68m x 4.30m)
 Downstairs Cloakroom

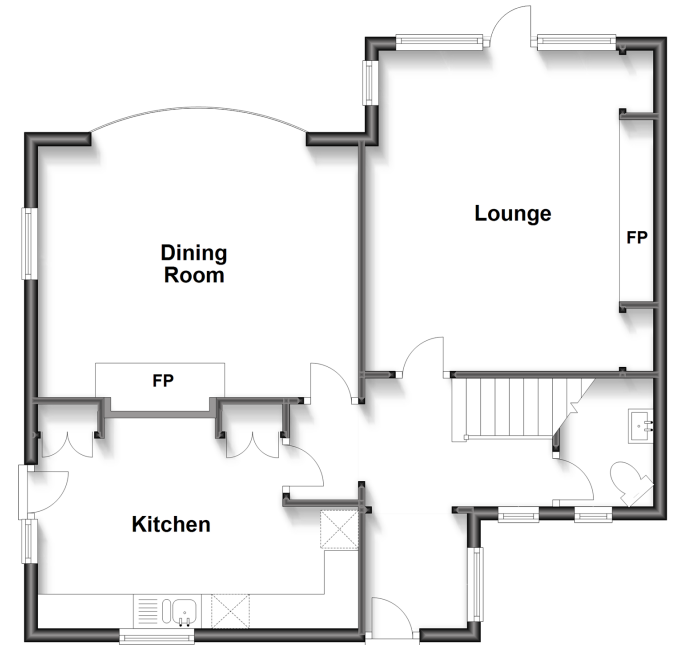
FIRST FLOOR

Landing
 Bedroom 3 : 9'8 x 7'3 (2.95m x 2.21m)
 Bathroom : 6'1 x 5'6 (1.86m x 1.68m)
 Separate Toilet : 6'3 x 2'9 (1.91m x 0.84m)
 Bedroom 1 : 12'5 x 12'1 (3.79m x 3.69m)
 Bedroom 2 : 13'0 x 10'7 (3.97m x 3.23m)

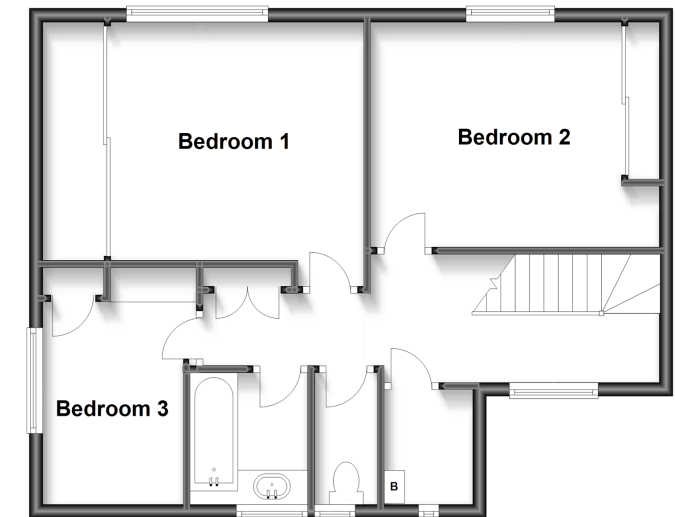
OUTSIDE

Front Garden
 Rear Garden
 Off Road Parking

Ground Floor
 Approx. 64.7 sq. metres (696.6 sq. feet)



First Floor
 Approx. 58.7 sq. metres (631.7 sq. feet)



Call Dover - 01304 214876 ■ wardsofKent.co.uk

- Legal advice should be taken to verify fixtures/fittings, planning, alterations and/or lease details
- Appliances & services are untested, dimensions are approximate and floor plans are not to scale
- Through a Homewise Home For Life Plan people aged 60+ can secure this property for up to 59% less, by purchasing a Lifetime Lease.



10734702/20230403/BH/AF