



Guide Price
£475,000

Freehold

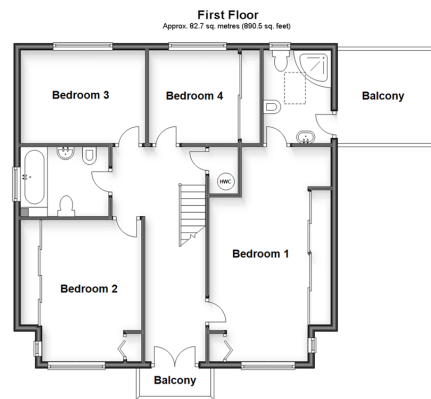
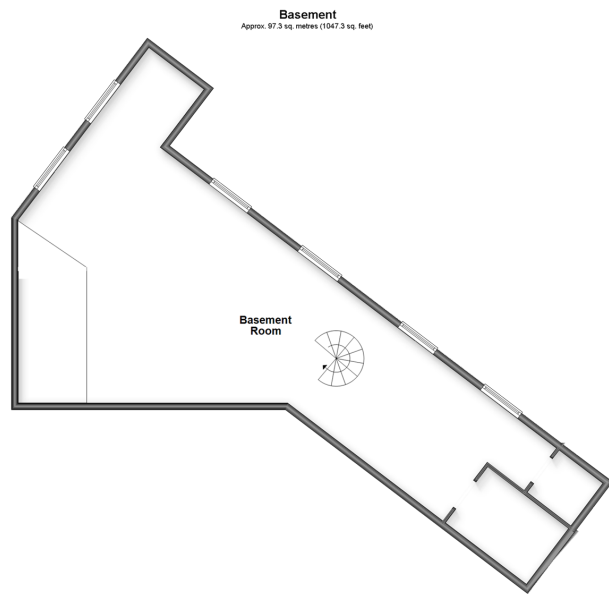
4x  2x  3x 

**Astley Avenue, Dover,
Kent, CT16**

OVER 60?

Secure this property
for up to **59% less!**

Wards
Helping you move forwards



Accommodation

GROUND FLOOR

Entrance Hallway
 Kitchen/Dining Area: 22'9 x 22'2 (6.94m x 6.76m)
 Family Room: 29'6 x 17'10 (9.00m x 5.44m)
 Lounge : 22'6 x 20'7 (6.86m x 6.28m)
 Sitting Room: 13'4 x 12'6 (4.07m x 3.81m)
 Downstairs Cloakroom
 Utility Room

BASEMENT

Basement Room

FIRST FLOOR

Landing
 Balcony Off From The Landing
 Bedroom 4: 9'1 x 8'9 (2.77m x 2.67m)
 Bedroom 2 : 11'9 x 8'6 (3.58m x 2.59m)
 Bedroom 3 : 13'6 x 11'7 (4.12m x 3.53m)
 Bathroom : 8'7 x 6'9 (2.62m x 2.06m)
 Bedroom 1 : 21'2 x 9'7 (6.46m x 2.92m)
 En-Suite Shower Room
 Balcony Off From En-Suite

OUTSIDE

Front & Rear Gardens
 Tandem Double Garage



Main features

- Chain free & in the heart of Dover
- Roof terrace and large basement space
- Tandem double garage
- Close to local schools & shops, making this an ideal family home
- Fantastic access to the A2/M2, A20/M20 along with high speed rail links via Dover Priory train station



Nearest Schools

Primary Schools: Charlton C of E Primary 0.1 miles, Barton Junior School 0.1 miles, St Richard's Catholic Primary 0.4 miles
Secondary Schools: St Edmund's Catholic School 0.1 miles, Dover Grammar School for Girls 0.2 miles.



Transport Information

Train Stations: Dover Priory 0.7 miles, Kearsney 1.6 miles, Martin Mill 2.9 miles



Address

Astley Avenue, Dover, Kent, CT16



Directions

For directions to this property please contact us.



Wards
Helping you move forwards

Call Dover Branch 01304 214876 ■ wardsofkent.co.uk



■ Legal advice should be taken to verify fixtures/fittings, planning, alterations and/or lease details ■ Appliances & services are untested, dimensions are approximate and floor plans are not to scale
■ Through a Homewise Home For Life Plan people aged 60+ can secure this property for up to 59% less, by purchasing a Lifetime Lease.



10734704/20240208/GH/AF