



OVER 60?

Secure this property
for up to **59% less!**



Video Tour available

Guide Price
£140,000

Leasehold

2x  1x  1x 

**C, Salisbury Road,
Dover, Kent, CT16**

Wards
Helping you move forwards



Main features

- Top floor apartment over two floors
- Popular central location, short walk to shops
- Recently refurbished, move in & don't lift a finger
- Ideal first time buy, or to add to a portfolio or buy to let opportunity
- No onward chain complications

Accommodation

FIRST FLOOR

Entrance Hallway

Lounge : 14'4 x 11'8 (4.37m x 3.56m)

Bathroom : 5'5 x 4'9 (1.65m x 1.45m)

Kitchen : 8'3 x 7'3 (2.52m x 2.21m)

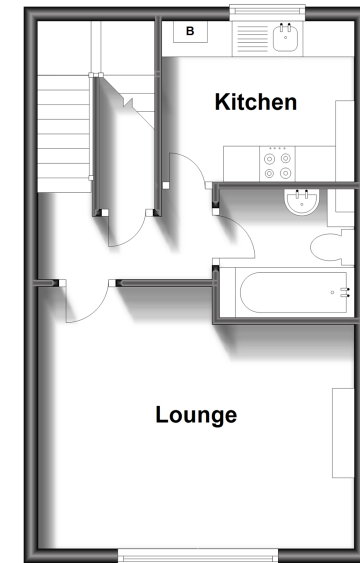
SECOND FLOOR

Landing

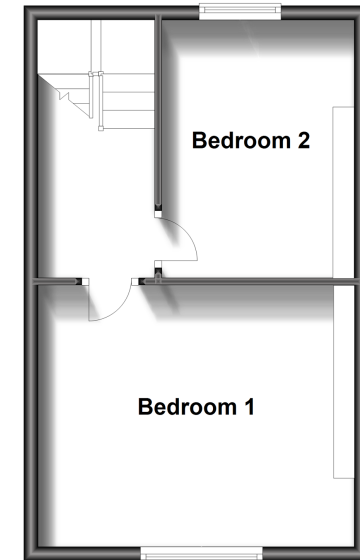
Bedroom 2: 11'9 x 8'3 (3.58m x 2.52m)

Bedroom 1 : 13'6 x 12'4 (4.12m x 3.76m)

First Floor
Approx. 33.0 sq. metres (354.8 sq. feet)



Second Floor
Approx. 33.0 sq. metres (354.8 sq. feet)



Call Dover - 01304 214876 ■ wardsofkent.co.uk

- Legal advice should be taken to verify fixtures/fittings, planning, alterations and/or lease details
- Appliances & services are untested, dimensions are approximate and floor plans are not to scale
- Through a Homewise Home For Life Plan people aged 60+ can secure this property for up to 59% less, by purchasing a Lifetime Lease.



10734718/20230315/AF/OV