



Price
£290,000

Freehold

3x  1x  1x 

**Markland Road, Elms
Vale, Dover, Kent, CT17**

OVER 60?

Secure this property
for up to **59% less!**

Wards
Helping you move forwards



Main features

- Located in the highly sought-after area of Elms Vale
- Close to schools, shops & park
- Close to A256 & A2
- Close to Dover mainline railway station with high-speed links to London
- Ready to mark with your own stamp

Accommodation

GROUND FLOOR

Entrance Lobby
Entrance Hallway
Downstairs Cloakroom
Lounge : 14'8 x 12'4 (4.47m x 3.76m)
Dining Room : 12'8 x 10'9 (3.86m x 3.28m)
Kitchen : 10'3 x 7'4 (3.13m x 2.24m)

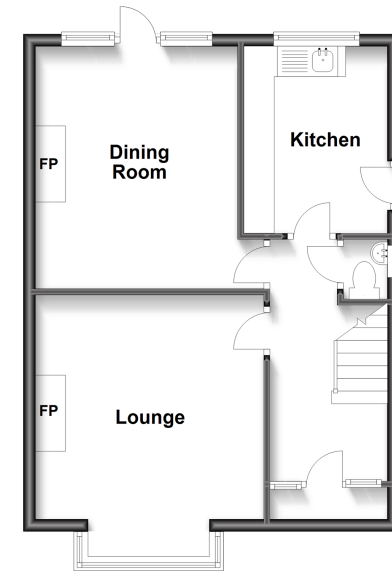
FIRST FLOOR

Landing
Bathroom : 7'6 x 6'4 (2.29m x 1.93m)
Bedroom 2 : 12'8 x 12'1 (3.86m x 3.69m)
Bedroom 1 : 14'8 x 11'2 (4.47m x 3.41m)
Bedroom 3 : 7'5 x 6'4 (2.26m x 1.93m)

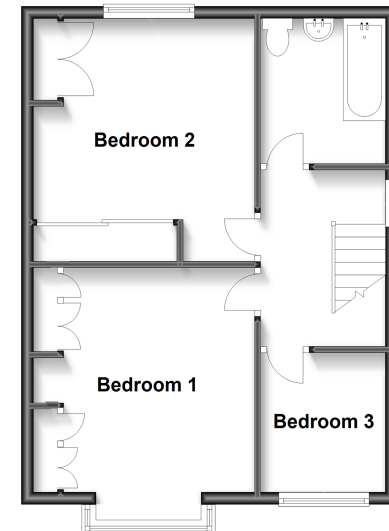
OUTSIDE

Front Garden
Rear Garden

Ground Floor
Approx. 45.9 sq. metres (494.2 sq. feet)



First Floor
Approx. 45.7 sq. metres (491.9 sq. feet)



Call Dover - 01304 214876 ■ wardsofkent.co.uk

- Legal advice should be taken to verify fixtures/fittings, planning, alterations and/or lease details
- Appliances & services are untested, dimensions are approximate and floor plans are not to scale
- Through a Homewise Home For Life Plan people aged 60+ can secure this property for up to 59% less, by purchasing a Lifetime Lease.



10734730/20221118/SB/OV