

OVER 60?

Secure this property
for up to **59% less!**



Video Tour available

Price

£150,000

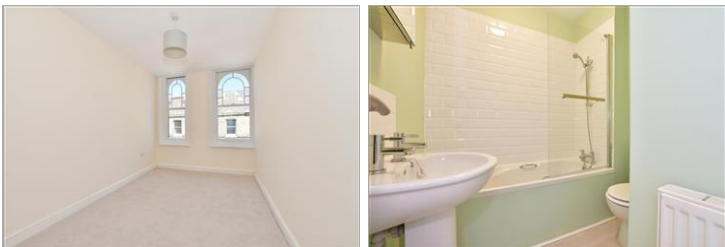
Leasehold

2x 1x 1x

Worthington Street, Dover, Kent, CT17

Wards

Helping you move forwards



Main features

- Spacious well decorated two bedroom apartment with view of Dover Castle
- Fully fitted kitchen with new induction hob
- Central Heating and Power Shower
- Central location with easy access to shops & Dover Priory
- 12 month car park pass

Accommodation

SECOND FLOOR

Entrance Hallway

Lounge : 19'3 x 10'10 (5.87m x 3.30m)

Kitchen Area : 8'3 x 7'11 (2.52m x 2.41m)

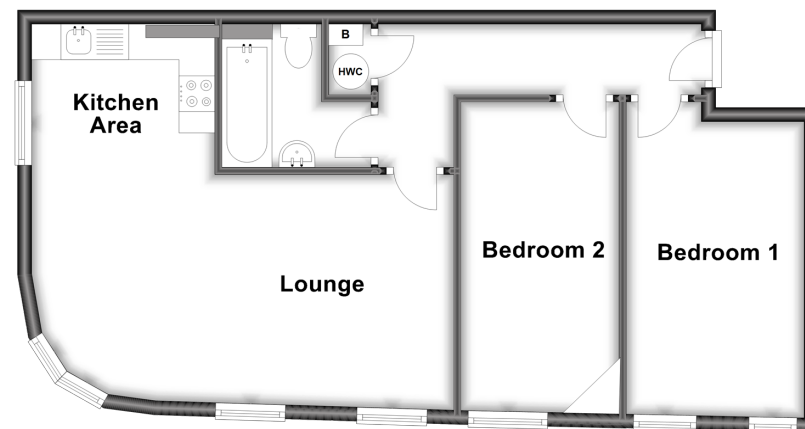
Bathroom : 6'5 x 5'9 (1.96m x 1.75m)

Bedroom 1 : 17'3 x 14'0 (5.26m x 4.27m)

Bedroom 2 : 13'5 x 8'1 (4.09m x 2.47m)

Second Floor

Approx. 55.8 sq. metres (601.0 sq. feet)



Call Dover - 01304 214876 ■ wardsofkent.co.uk

- Legal advice should be taken to verify fixtures/fittings, planning, alterations and/or lease details
- Appliances & services are untested, dimensions are approximate and floor plans are not to scale
- Through a Homewise Home For Life Plan people aged 60+ can secure this property for up to 59% less, by purchasing a Lifetime Lease.

