



OVER 60?

Secure this property
for up to **59% less!**

Price

£310,000

Freehold

2x  1x  1x 

**Church Hill, Eythorne,
Dover, Kent, CT15**

Wards
Helping you move forwards



Main features

- Sought after village location
- Off road parking
- Large rear garden, perfect for children and pets
- Close to the village shop, train station and primary school
- Excellent transport links via A2 & A20

Accommodation

GROUND FLOOR

Entrance Hallway

Lounge : 11'0 x 9'2 (3.36m x 2.80m)

Dining Area: 14'2 x 10'4 (4.32m x 3.15m)

Kitchen: 9'9 x 8'11 (2.97m x 2.72m)

Storage Area : 9'6 x 3'8 (2.90m x 1.12m)

SPLIT LEVEL FIRST FLOOR

Landing

Bedroom 1 : 11'9 x 10'8 (3.58m x 3.25m)

Bedroom 2 : 11'8 x 10'9 (3.56m x 3.28m)

Bathroom

OUTSIDE

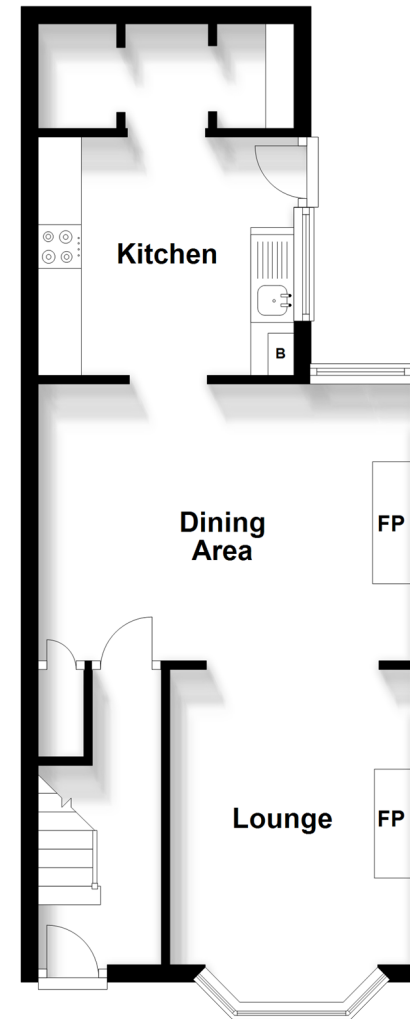
Front Garden

Rear Garden

Off Road Parking

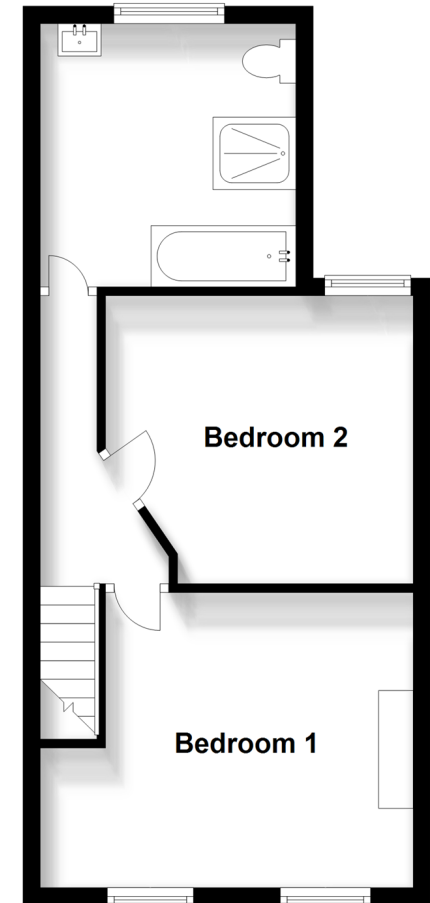
Ground Floor

Approx. 41.1 sq. metres (442.9 sq. feet)



Split Level First Floor

Approx. 38.5 sq. metres (414.1 sq. feet)



Call Dover - 01304 214876 ■ wardsofKent.co.uk

- Legal advice should be taken to verify fixtures/fittings, planning, alterations and/or lease details
- Appliances & services are untested, dimensions are approximate and floor plans are not to scale
- Through a Homewise Home For Life Plan people aged 60+ can secure this property for up to 59% less, by purchasing a Lifetime Lease.



10734766/20230813/TE/CB