



OVER 60?

Secure this property
for up to **59% less!**

Guide Price
£310,000

Freehold

3x  1x  1x 

**Canterbury Road,
Lydden, Dover, Kent,
CT15**

Wards
Helping you move forwards



Main features

- Charming period cottage
- High desirable village location in Lydden
- Front & rear gardens
- Multi fuel burner, gas central heating and double glazing
- Direct access to Canterbury and Dover via A2

Accommodation

SPLIT LEVEL GROUND FLOOR

Entrance Hall

Lounge: 15'9 x 13'5 (4.80m x 4.09m)

Kitchen: 11'3 x 9'5 (3.43m x 2.87m)

Bathroom: 10'3 x 4'7 (3.13m x 1.40m)

SPLIT LEVEL FIRST FLOOR

Landing

Bedroom 1: 11'3 x 8'5 (3.43m x 2.57m)

Bedroom 2: 11'6 x 8'1 (3.51m x 2.47m)

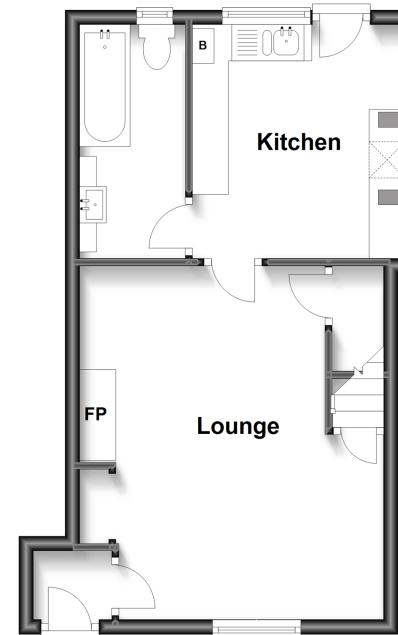
Bedroom 3: 8'9 x 7'3 (2.67m x 2.21m)

OUTSIDE

Front & Rear Gardens

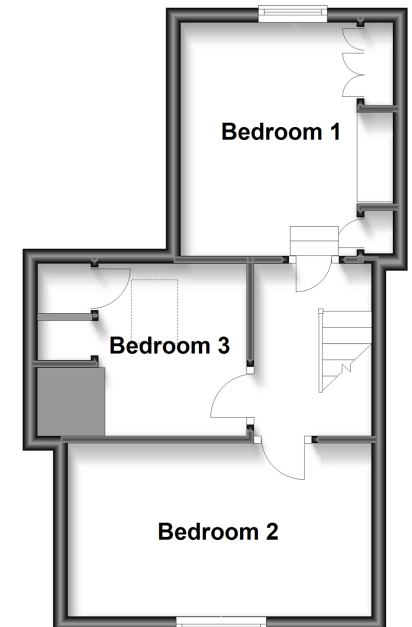
Split Level Ground Floor

Approx. 36.1 sq. metres (388.4 sq. feet)



Split Level First Floor

Approx. 31.3 sq. metres (336.8 sq. feet)



Call Dover - 01304 214876 ■ wardsofkent.co.uk

- Legal advice should be taken to verify fixtures/fittings, planning, alterations and/or lease details
- Appliances & services are untested, dimensions are approximate and floor plans are not to scale
- Through a Homewise Home For Life Plan people aged 60+ can secure this property for up to 59% less, by purchasing a Lifetime Lease.



10734769/20230130/AF/AF