



Price
£250,000

Leasehold

2x  1x  1x 

**Cambridge Terrace,
Dover, Kent, CT16**

OVER 60?

Secure this property
for up to **59% less!**

Wards
Helping you move forwards



Main features

- Beautifully presented first floor apartment
- Close to St James's, Dover's newest retail park
- Close to restaurants, Dover seafront & marina
- Stunning period property
- In warmer months enjoy the balconies to sit and relax

Accommodation

FIRST FLOOR

Entrance Hallway

Lounge : 13'8 x 11'1 (4.17m x 3.38m)

Balcony

Dining Area : 17'7 x 6'1 (5.36m x 1.86m)

Kitchen : (L-shaped) 15'5 x 4'9 (4.70m x 1.45m) plus 7'4 x 10'5 (2.24m x 3.18m)

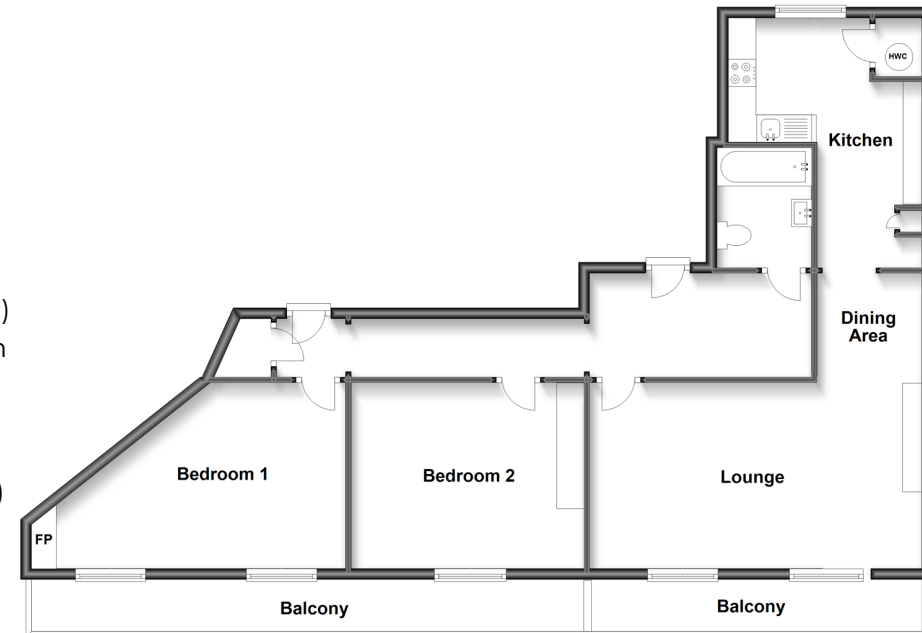
Bathroom : 7'0 x 5'6 (2.14m x 1.68m)

Bedroom 2: 12'7 x 11'2 (3.84m x 3.41m)

Bedroom 1 : 18'5 (5.62m) narrowing to 5'6 at narrowest point (1.68m) x 11'3 (3.43m)

Balcony

First Floor
Approx. 87.5 sq. metres (942.3 sq. feet)



Call Dover - 01304 214876 ■ wardsofkent.co.uk

- Legal advice should be taken to verify fixtures/fittings, planning, alterations and/or lease details
- Appliances & services are untested, dimensions are approximate and floor plans are not to scale
- Through a Homewise Home For Life Plan people aged 60+ can secure this property for up to 59% less, by purchasing a Lifetime Lease.



10734798/20221122/TE/OV