



OVER 60?

Secure this property
for up to **59% less!**

Guide Price
£275,000

Freehold

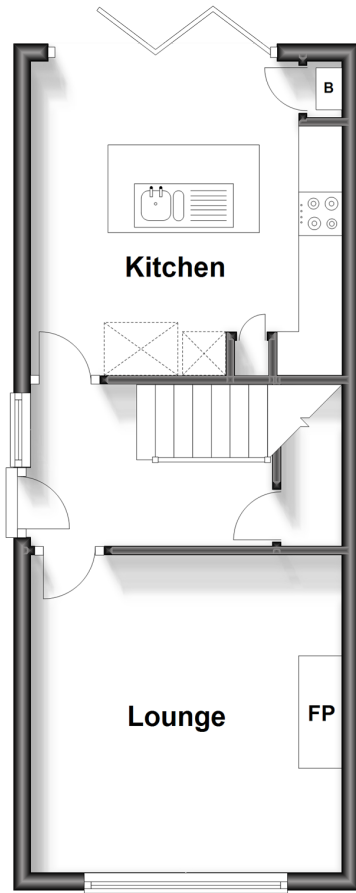
3x  2x  1x 

**Beech Green Close,
Eythorne, Dover, Kent,
CT15**

Wards
Helping you move forwards

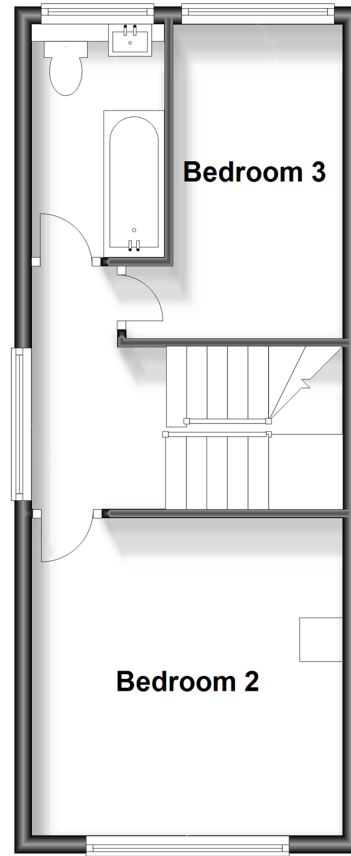
Ground Floor

Approx. 33.5 sq. metres (360.4 sq. feet)



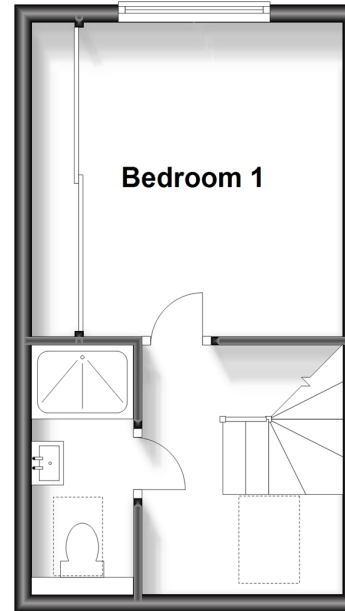
First Floor

Approx. 33.7 sq. metres (363.0 sq. feet)



Second Floor

Approx. 23.6 sq. metres (254.2 sq. feet)



Accommodation

GROUND FLOOR

Entrance Hallway

Kitchen : 11'8 x 11'7 (3.56m x 3.53m)

Lounge : 11'9 x 11'8 (3.58m x 3.56m)

FIRST FLOOR

Landing

Bedroom 2: 12'2 x 11'8 (3.71m x 3.56m)

Bedroom 3: 12'5 x 6'8 (3.79m x 2.03m)

Bathroom

SECOND FLOOR

Landing

Bedroom 1 : 11'9 x 10'2 (3.58m x 3.10m)

En-Suite Shower Room: 5'7 x 3'6 (1.70m x 1.07m)

OUTSIDE

Front Garden

Rear Garden

Garage & off road parking



Main features

- Extended family house
- Garage and off road parking
- En-suite shower room to the main bedroom & family bathroom
- Sought after location of Eythorne
- With a village shop, pub and church, everything you could need in a village



Nearest Schools

Primary Schools: Eythorne Elvington Community Primary 1.3 miles, Sibertswold C of E Primary at Shepherdswell 3.0 miles, St Joseph's Catholic Primary 3.3 miles
Secondary Schools: Dover Christchurch Academy 4.4 miles, Astor College for the Arts 4.8 miles.



Transport Information

Train Stations: Shepherdswell 2.8 miles, Kearsney 5.0 miles, Martin Mill 5.0 miles



Address

Beech Green Close, Eythorne, Dover, Kent, CT15



Directions

For directions to this property please contact us.



Wards
Helping you move forwards

Call Dover Branch 01304 214876 ■ wardsofkent.co.uk



- Legal advice should be taken to verify fixtures/fittings, planning, alterations and/or lease details
- Appliances & services are untested, dimensions are approximate and floor plans are not to scale
- Through a Homewise Home For Life Plan people aged 60+ can secure this property for up to 59% less, by purchasing a Lifetime Lease.



10734801/20231124/SB/OV