



**Price**  
**£475,000**

**Freehold**

4x  2x  2x 

**Chapel Hill, Eythorne,  
Dover, Kent, CT15**

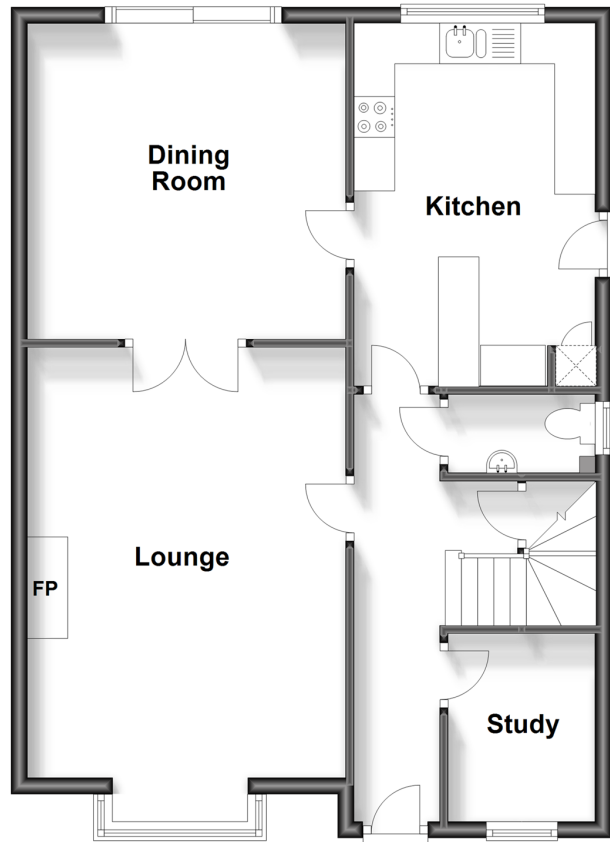
**OVER 60?**

Secure this property  
for up to **59% less!**

*Wards*  
Helping you move forwards

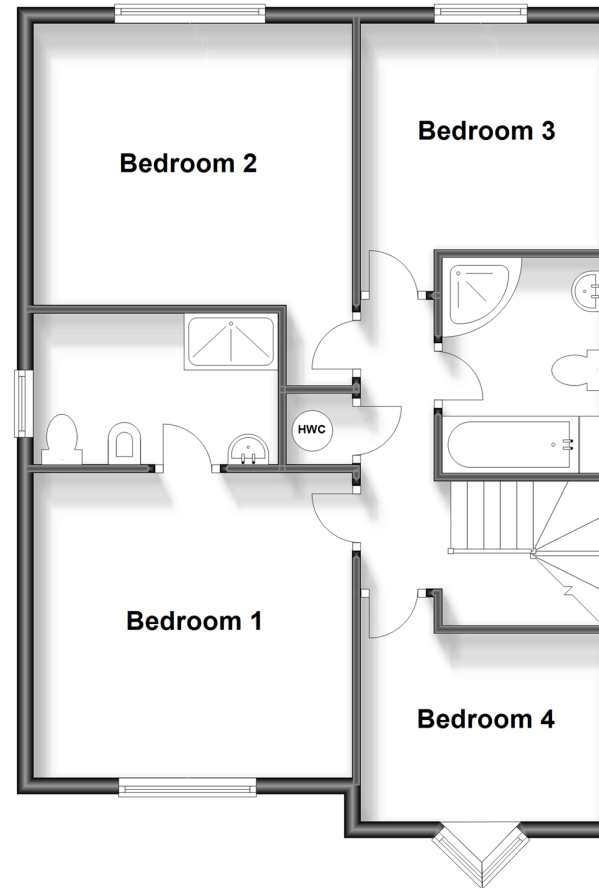
## Ground Floor

Approx. 67.1 sq. metres (722.8 sq. feet)



## First Floor

Approx. 66.9 sq. metres (720.6 sq. feet)



## Accommodation

### GROUND FLOOR

Entrance Hallway  
Downstairs Cloakroom  
Study : 7'5 x 6'0 (2.26m x 1.83m)  
Lounge : 19'1 x 13'0 (5.82m x 3.97m)  
Dining Room : 15'0 x 12'9 (4.58m x 3.89m)  
Kitchen : 12'9 x 9'10 (3.89m x 3.00m)

### FIRST FLOOR

Landing  
Bedroom 1 : 13'0 x 12'4 (3.97m x 3.76m)  
En-Suite Shower Room  
Bedroom 2 : 13'0 x 11'3 (3.97m x 3.43m)  
Bedroom 3 : 9'9 x 9'3 (2.97m x 2.82m)  
Bedroom 4 : 9'9 x 7'3 (2.97m x 2.21m)  
Family Bathroom

### OUTSIDE

Front Garden  
Rear Garden  
Garage & Off Road Parking





## Main features

- Located in the village of Eythorne
- Garage and plenty of off-road parking
- 2 receptions rooms and a study
- Close to local primary schools
- Ideal for commuting with easy access to A2/M2 & A256
- En-suite shower room to main bedroom as well as family bathroom



### Nearest Schools

Primary Schools: Eythorne Elvington Community Primary 0.4 miles, Sibertswold C of E Primary at Shepherdswell 1.6 miles, Lydden Primary 2.5 miles. Secondary Schools: Dover Christchurch Academy 3.5 miles, Ripplevale School 4.1 miles, Duke of York's Royal Military School 4.5 miles



### Transport Information

Train Stations: Shepherdswell 1.6 miles, Kearsney 3.3 miles, Martin Mill 4.1 miles



### Address

Chapel Hill, Eythorne, Dover, Kent, CT15



### Directions

For directions to this property please contact us.





**Wards**  
Helping you move forwards

Call Dover Branch 01304 214876 ■ [wardsofkent.co.uk](http://wardsofkent.co.uk)



■ Legal advice should be taken to verify fixtures/fittings, planning, alterations and/or lease details ■ Appliances & services are untested, dimensions are approximate and floor plans are not to scale  
■ Through a Homewise Home For Life Plan people aged 60+ can secure this property for up to 59% less, by purchasing a Lifetime Lease.



10734817/20240316/TE/OV