



Price
£280,000

Freehold

2x  1x  2x 

**Broadacre, Lydden,
Dover, Kent, CT15**

OVER 60?

Secure this property
for up to **59% less!**

Wards
Helping you move forwards



Main features

- Fantastic family home with a garage & off-road parking
- Sought after village location of Lydden
- Quiet cul-de-sac location with fields to the rear
- Low maintenance rear garden
- Brilliant access to Dover & Canterbury via A2 & Beyond

Accommodation

GROUND FLOOR

Entrance Hallway

Lounge : 16'9 x 11'6 (5.11m x 3.51m)

Study (Used as a dining room): 12'5 x 8'3 (3.79m x 2.52m)

Utility : 7'6 x 7'1 (2.29m x 2.16m)

Kitchen : 11'9 x 7'6 (3.58m x 2.29m)

Shower Room: 8'4 x 4'9 (2.54m x 1.45m)

Bedroom 2 : 11'2 x 7'0 (3.41m x 2.14m)

Bedroom 1 : 12'6 x 10'6 (3.81m x 3.20m)

OUTSIDE

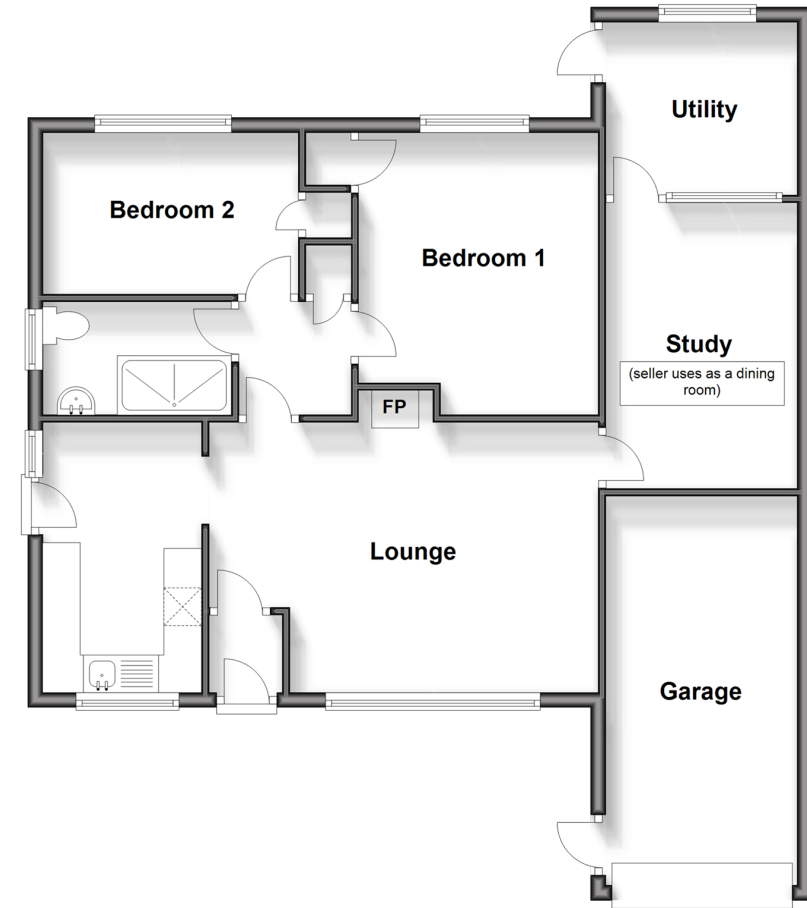
Front Garden

Rear Garden

Garage & Off Road Parking

Ground Floor

Approx. 84.8 sq. metres (913.3 sq. feet)



Call Dover - 01304 214876 ■ wardsofkent.co.uk

- Legal advice should be taken to verify fixtures/fittings, planning, alterations and/or lease details
- Appliances & services are untested, dimensions are approximate and floor plans are not to scale
- Through a Homewise Home For Life Plan people aged 60+ can secure this property for up to 59% less, by purchasing a Lifetime Lease.



10734866/20240403/TE/GM