



Guide Price
£400,000

Freehold

3x  2x  1x 

**The Orchard, Adelaide
Road, Eythorne, Dover,
Kent, CT15**

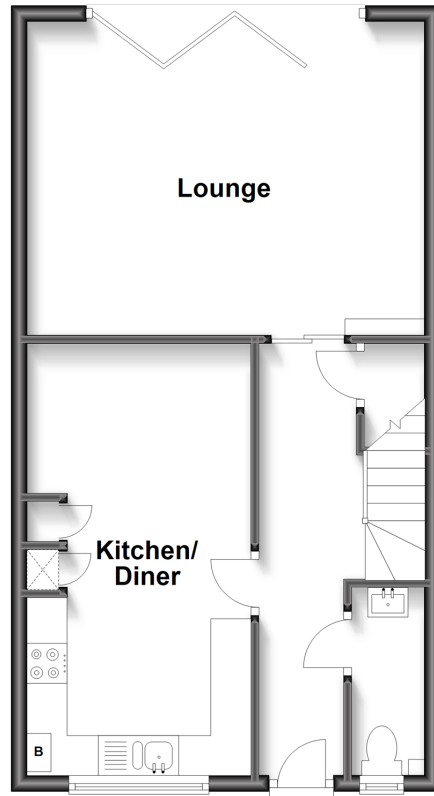
OVER 60?

Secure this property
for up to **59% less!**

Wards
Helping you move forwards

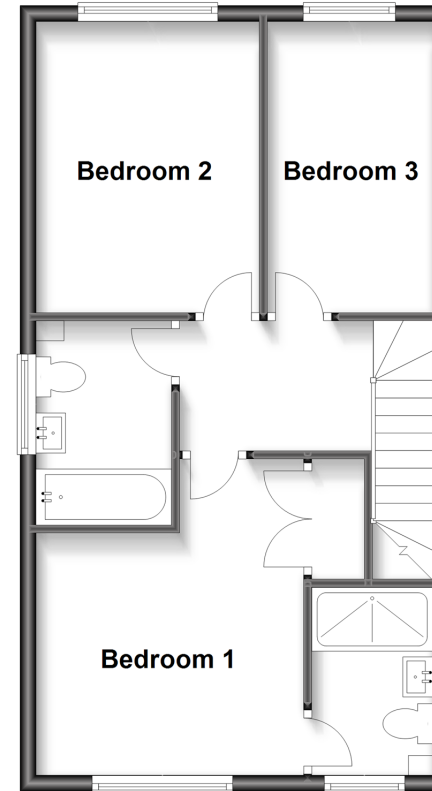
Ground Floor

Approx. 46.6 sq. metres (501.9 sq. feet)



First Floor

Approx. 46.6 sq. metres (501.9 sq. feet)



Accommodation

GROUND FLOOR

Entrance Hallway

Lounge : 16'2 x 12'8 (4.93m x 3.86m)

Kitchen/Diner: 17'8 x 9'1 (5.39m x 2.77m)

Downstairs Cloakroom

FIRST FLOOR

Landing

Bedroom 3 : 11'9 x 6'6 (3.58m x 1.98m)

Bedroom 2 : 12'0 x 9'1 (3.66m x 2.77m)

Bathroom : 8'5 x 5'7 (2.57m x 1.70m)

Bedroom 1 : 13'0 x 10'9 (3.97m x 3.28m)

En-Suite Shower Room : 8'1 x 4'8 (2.47m x 1.42m)

OUTSIDE

Front Garden

Rear Garden

Off Road Parking



Main features

- Breath taking family home set in the heart of the Kent countryside
- 8 years of new build warranty left
- Off road parking & rear garden
- Immaculate throughout
- Fantastic access via A2/M2 to Dover & Canterbury



Nearest Schools

Primary Schools: Eythorne Elvington Community Primary 0.1 miles, Sibertswold C of E Primary at Shepherdswell 1.6 miles. Secondary Schools: Dover Christchurch Academy 3.9 miles, Ripplevale School 4.4 miles, Duke of York's Royal Military School 4.9 miles.



Transport Information

Train Stations: Shepherdswell 1.6 miles, Kearsney 3.7 miles, Martin Mill 4.5 miles



Address

The Orchard, Adelaide Road, Eythorne, Dover, Kent, CT15



Directions

For directions to this property please contact us.



Call Dover Branch 01304 214876 ■ wardsofkent.co.uk



- Legal advice should be taken to verify fixtures/fittings, planning, alterations and/or lease details
- Appliances & services are untested, dimensions are approximate and floor plans are not to scale
- Through a Homewise Home For Life Plan people aged 60+ can secure this property for up to 59% less, by purchasing a Lifetime Lease.



10734875/20230214/SB/AF