

**OVER 60?**

Secure this property  
for up to **59% less!**



Video Tour available

**Guide Price**  
**£180,000**  
**Leasehold**

2x 1x 1x

Goodfellow Way, Dover, Kent, CT16

*Wards*  
Helping you move forwards





## Main features

- Ground floor apartment
- Communal garden overlooking the River Dour
- No onward chain complications
- Ideal first time buy or buy to let investment
- Residents parking, first come-first serve

## Accommodation

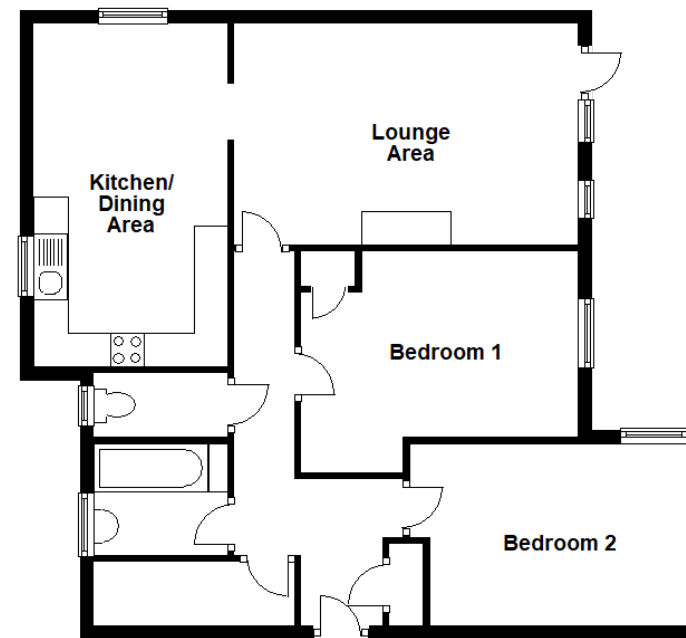
### GROUND FLOOR

Entrance Hallway  
 Lounge : 16'6 x 10'9 (5.03m x 3.28m)  
 Kitchen/Diner : 16'7 x 9'5 (5.06m x 2.87m)  
 Bathroom  
 Separate Cloakroom  
 Bedroom 1: 13'3 x 9'0 (4.04m x 2.75m)  
 Bedroom 2 : 13'5 x 8'8 (4.09m x 2.64m)

### OUTSIDE

Communal Gardens  
 Residents Parking on a  
 1st Come/1st Serve

**Ground Floor**  
 Approx. 740.6 sq. feet



**Call Dover - 01304 214876 ■ [wardsofKent.co.uk](http://wardsofKent.co.uk)**

- Legal advice should be taken to verify fixtures/fittings, planning, alterations and/or lease details
- Appliances & services are untested, dimensions are approximate and floor plans are not to scale
- Through a Homewise Home For Life Plan people aged 60+ can secure this property for up to 59% less, by purchasing a Lifetime Lease.

