



Guide Price
£425,000

Freehold

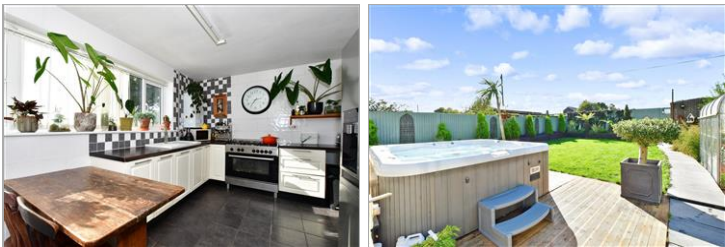
4x  1x  2x 

Heights Terrace, Dover,
Kent, CT17

OVER 60?

Secure this property
for up to **59% less!**

Wards
Helping you move forwards



Main features

- Family house
- Stunning uninterrupted views of Dover Castle
- Plenty of off street parking, big enough for cars & camper van
- Good sized rear garden, ideal for a growing family
- Versatile accommodation with home office & utility area

Accommodation

GROUND FLOOR

Entrance Hallway

Lounge : 19'3 x 12'0 (5.87m x 3.66m)

Downstairs Toilet

Kitchen : 15'7 x 9'7 (4.75m x 2.92m)

Study: 9'8 x 7'7 (2.95m x 2.31m)

Lean-To: (L-shaped) 8'2 x 4'9 (2.49m x 1.45m) plus 9'4 x 5'2 (2.85m x 1.58m)

FIRST FLOOR

Landing

Shower Room: 7'9 x 4'6 (2.36m x 1.37m)

Bedroom 3: 9'8 x 9'5 (2.95m x 2.87m)

Bedroom 1: 12'7 x 9'3 (3.84m x 2.82m)

Bedroom 2: 11'4 x 9'5 (3.46m x 2.87m)

Bedroom 4 : 9'4 x 7'9 (2.85m x 2.36m)

OUTSIDE

Front Garden

Rear Garden

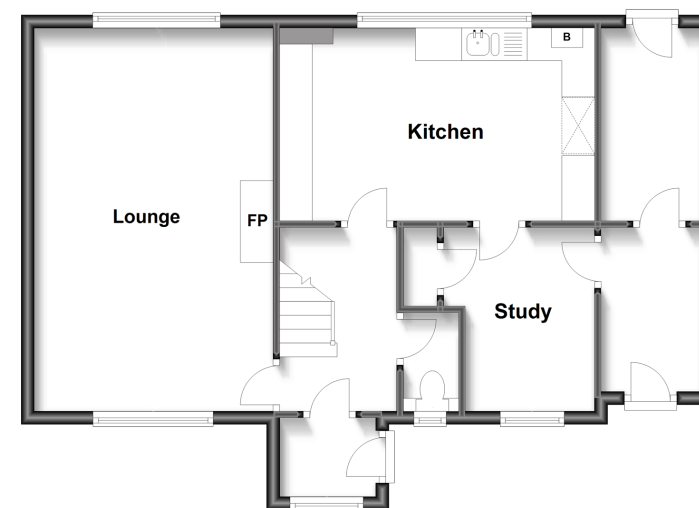
Off Road Parking

Call Dover - 01304 214876 ■ wardsofKent.co.uk

- Legal advice should be taken to verify fixtures/fittings, planning, alterations and/or lease details
- Appliances & services are untested, dimensions are approximate and floor plans are not to scale
- Through a Homewise Home For Life Plan people aged 60+ can secure this property for up to 59% less, by purchasing a Lifetime Lease.

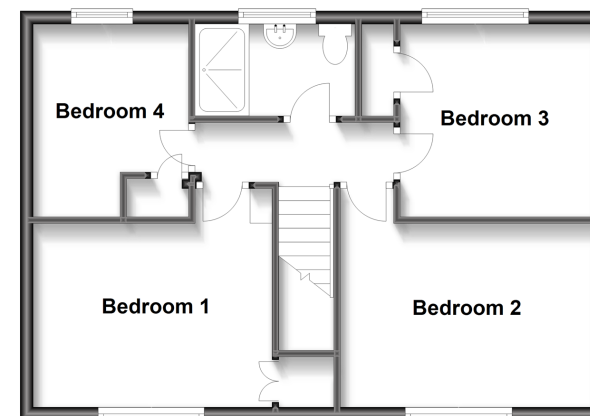
Ground Floor

Approx. 61.2 sq. metres (659.3 sq. feet)



First Floor

Approx. 50.2 sq. metres (540.8 sq. feet)



10734898/20230418/DC/OV