



**OVER 60?**

Secure this property  
for up to **59% less!**

**Price**

**£265,000**

**Freehold**

3x  1x  1x 

**Eaves Road, Dover,  
Kent, CT17**

*Wards*  
Helping you move forwards



## Main features

- Ideal family home
- Stunning views across Dover
- Tiered rear garden with decking area
- Quiet cul de sac in Elms Vale with a selection of schools & shops close by
- Easy access to Dover Priory railway station with its fast links to London as well as easy access to A2/M20

## Accommodation

### GROUND FLOOR

Entrance Hallway

Dining Area : 9'3 x 8'8 (2.82m x 2.64m)

Lounge : 15'4 x 11'9 (4.68m x 3.58m)

Kitchen: 9'2 x 8'9 (2.80m x 2.67m)

### FIRST FLOOR

Landing

Separate Toilet

Bathroom : 5'3 x 5'1 (1.60m x 1.55m)

Bedroom 2: 11'4 x 9'5 (3.46m x 2.87m)

Bedroom 1 : 13'8 x 9'5 (4.17m x 2.87m)

Bedroom 3 : 10'7 x 8'2 (3.23m x 2.49m)

### OUTSIDE

Front Garden

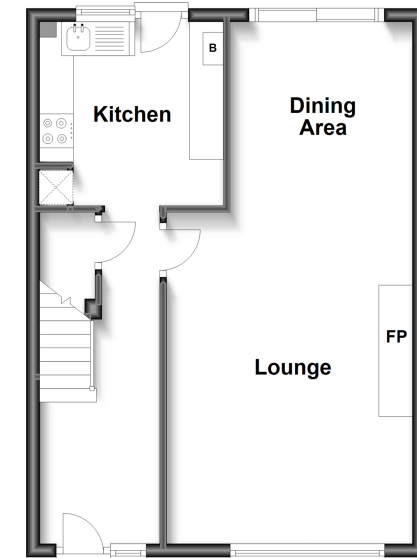
Rear Garden

**Call Dover - 01304 214876 ■ [wardsofkent.co.uk](http://wardsofkent.co.uk)**

- Legal advice should be taken to verify fixtures/fittings, planning, alterations and/or lease details
- Appliances & services are untested, dimensions are approximate and floor plans are not to scale
- Through a Homewise Home For Life Plan people aged 60+ can secure this property for up to 59% less, by purchasing a Lifetime Lease.

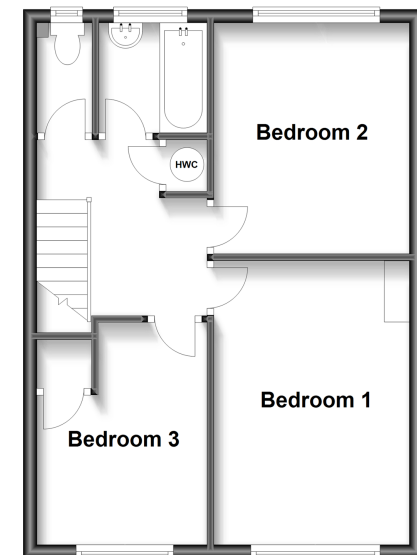
### Ground Floor

Approx. 42.5 sq. metres (457.6 sq. feet)



### First Floor

Approx. 42.5 sq. metres (457.6 sq. feet)



10734916/20230612/TE/SB