



Guide Price
£190,000

Freehold

2x  1x  1x 

**Clarendon Place, Dover,
Kent, CT17**



Video Tour available

Wards
Helping you move forwards



Main features

- Immaculate home set in a sought-after location
- Large living space, perfect for entertaining
- Ideal first time buy or buy to let investment property
- Chain free meaning you could be the owner sooner than you think
- Close proximity to town & Marina

Accommodation

SPLIT LEVEL GROUND FLOOR

Lounge : 14'1 into bay x 9'4 (4.30m x 2.85m)

Dining Area: 12'2 x 9'5 (3.71m x 2.87m)

Kitchen: 16'6 x 6'3 (5.03m x 1.91m)

FIRST FLOOR

Landing

Bathroom

Bedroom 2: 11'2 x 7'10 (3.41m x 2.39m)

Bedroom 1: 12'7 x 11'0 (3.84m x 3.36m)

OUTSIDE

Rear Garden

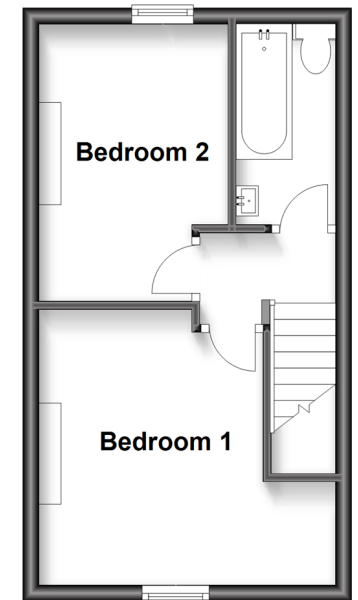
Split Level Ground Floor

Approx. 35.8 sq. metres (385.1 sq. feet)



First Floor

Approx. 25.9 sq. metres (278.3 sq. feet)



Call Dover - 01304 214876 ■ wardsof Kent.co.uk

- Legal advice should be taken to verify fixtures/fittings, planning, alterations and/or lease details
- Appliances & services are untested, dimensions are approximate and floor plans are not to scale



10734942/20230519/TE/GM