



OVER 60?

Secure this property
for up to **59% less!**

Price

£200,000

Freehold

2x  1x  1x 

**Terrace Road, Elvington,
Dover, Kent, CT15**

Wards
Helping you move forwards



Main features

- Ideal home for first time buyers
- Off street parking & garage
- Ready to mark with your own stamp
- Elvington Village is close to Canterbury, Deal and Dover
- Close to park, shop, primary school and easy access to the A256 & A2

Accommodation

GROUND FLOOR

Entrance Hallway

Lounge : 12'5 x 10'8 (3.79m x 3.25m)

Kitchen: 13'4 x 7'6 (4.07m x 2.29m)

Downstairs Cloakroom

FIRST FLOOR

Landing

Bathroom : 6'4 x 6'0 (1.93m x 1.83m)

Bedroom 2 : 10'4 x 7'9 (3.15m x 2.36m)

Bedroom 1 : 14'0 x 8'8 (4.27m x 2.64m)

OUTSIDE

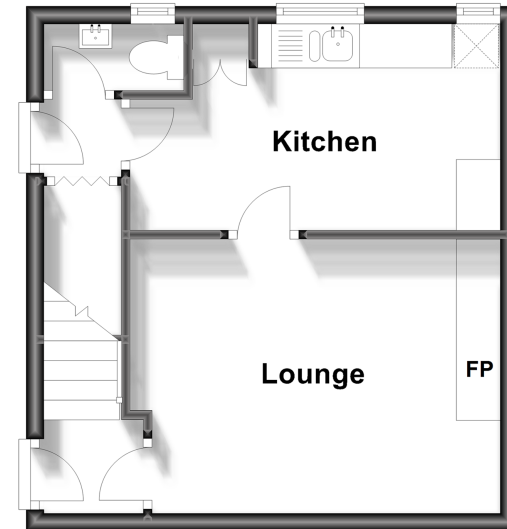
Front Garden

Rear Garden

Garage & Off Road Parking

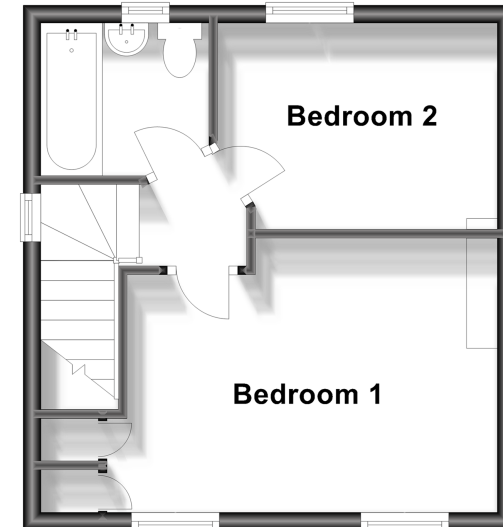
Ground Floor

Approx. 28.8 sq. metres (310.0 sq. feet)



First Floor

Approx. 28.8 sq. metres (310.0 sq. feet)



Call Dover - 01304 214876 ■ wardsofkent.co.uk

- Legal advice should be taken to verify fixtures/fittings, planning, alterations and/or lease details
- Appliances & services are untested, dimensions are approximate and floor plans are not to scale
- Through a Homewise Home For Life Plan people aged 60+ can secure this property for up to 59% less, by purchasing a Lifetime Lease.



10734954/20230610/TE/OV