

OVER 60?

Secure this property
for up to **59% less!**

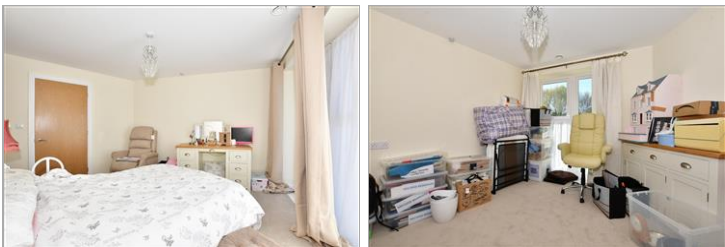


Price
£260,000
Leasehold

2x  1x  1x 

Elkington House, Charlton Green, Dover,
Kent, CT16

Wards
Helping you move forwards



Main features

- Beautiful first floor retirement property
- Balconies off both the bedroom & lounge, making the perfect sun-traps
- Secure residents parking
- Immaculately presented throughout
- Close to town & the beautiful Dover Marina

Accommodation

FIRST FLOOR

Entrance Hallway

Lounge/Diner : 25'7 x 14'10 (7.80m x 4.52m)

Balcony

Kitchen : 11'4 x 8'1 (3.46m x 2.47m)

Shower Room

Bedroom 1 : 14'0 x 12'3 (4.27m x 3.74m)

En-Suite Shower Room

Balcony

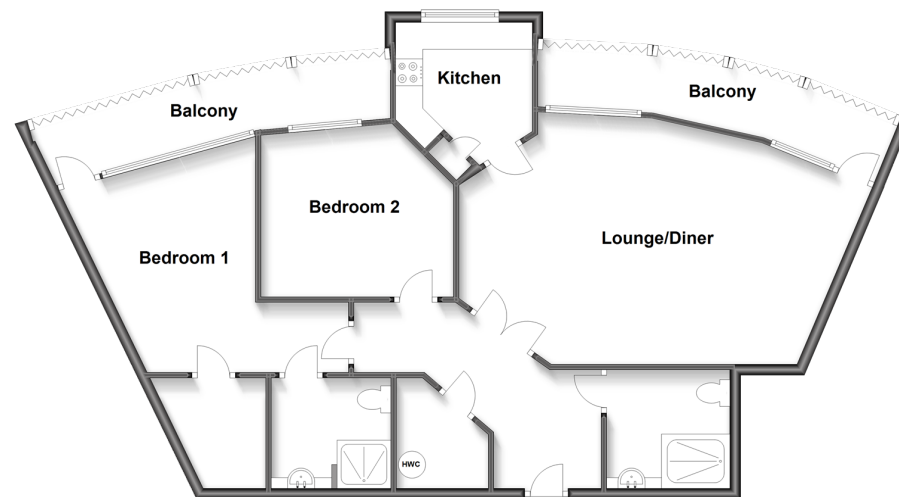
Bedroom 2 : 11'8 x 11'6 (3.56m x 3.51m)

OUTSIDE

Communal Gardens

Residents Parking

First Floor
Approx. 86.2 sq. metres (927.8 sq. feet)



Call Dover - 01304 214876 ■ wardsofkent.co.uk

- Legal advice should be taken to verify fixtures/fittings, planning, alterations and/or lease details
- Appliances & services are untested, dimensions are approximate and floor plans are not to scale
- Through a Homewise Home For Life Plan people aged 60+ can secure this property for up to 59% less, by purchasing a Lifetime Lease.



10734957/20230302/TE/GM