



**Guide Price**  
**£140,000**

**Leasehold**

1x  1x  1x 

**Templar Street, Dover,  
Kent, CT17**

**OVER 60?**

Secure this property  
for up to **59% less!**

*Wards*  
Helping you move forwards





## Main features

- Immaculate garden flat in a central location
- Beautifully presented throughout, ready to move straight into
- New lease on the completion/ reduced price without
- Ideal first time buy, or buy to let investment property

## Accommodation

### LOWER GROUND FLOOR

Entrance Hallway

Bedroom : 14'9 x 11'8 (4.50m x 3.56m)

Lounge : 15'1 x 11'6 (4.60m x 3.51m)

Kitchen : 19'0 x 6'1 (5.80m x 1.86m)

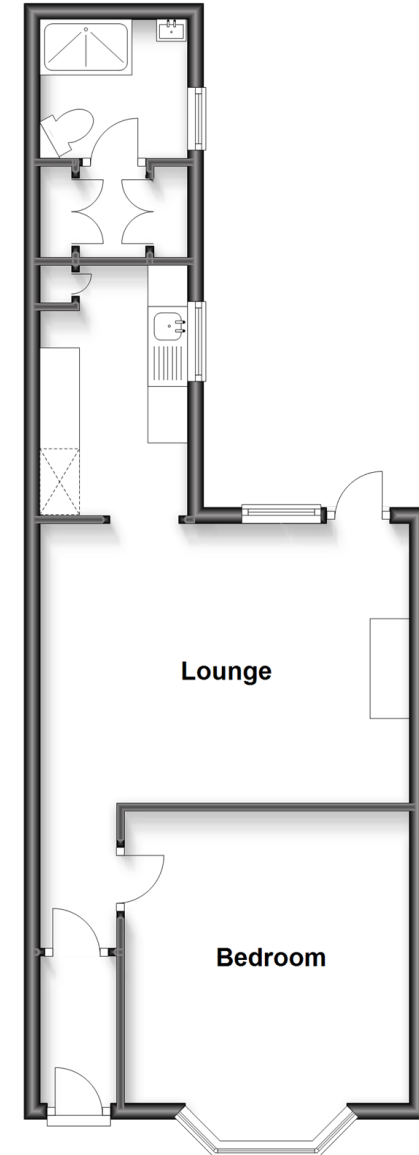
Shower Room

### OUTSIDE

Garden To The Rear

## Lower Ground Floor

Approx. 46.1 sq. metres (495.9 sq. feet)



**Call Dover - 01304 214876 ■ [wardsofkent.co.uk](http://wardsofkent.co.uk)**

- Legal advice should be taken to verify fixtures/fittings, planning, alterations and/or lease details
- Appliances & services are untested, dimensions are approximate and floor plans are not to scale
- Through a Homewise Home For Life Plan people aged 60+ can secure this property for up to 59% less, by purchasing a Lifetime Lease.



10734958/20230107/GM/GM