



OVER 60?

Secure this property
for up to **59% less!**



Video Tour available

Price

£250,000

Freehold

3x  1x  1x 

**Adelaide Road,
Elvington, Dover, Kent,
CT15**

Wards
Helping you move forwards



Main features

- Ideal family house in the village Elvington
- Close to local primary school
- Rear garden backs onto fields with stunning views
- Off road parking & side access
- No onward chain complications

Accommodation

GROUND FLOOR

Entrance Hallway

Kitchen: 18'0 x 7'6 (5.49m x 2.29m)

Shower Room : 6'3 x 5'5 (1.91m x 1.65m)

Lounge : 15'0 x 12'0 (4.58m x 3.66m)

FIRST FLOOR

Landing

Bedroom 3 : 8'4 x 7'9 (2.54m x 2.36m)

Bedroom 2 : 11'2 x 9'8 (3.41m x 2.95m)

Bedroom 1 : 18'2 x 8'7 (5.54m x 2.62m)

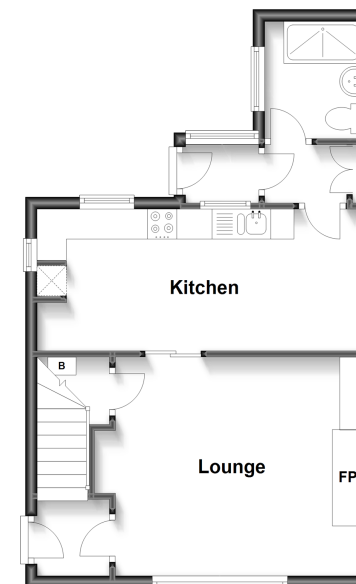
OUTSIDE

Front Garden

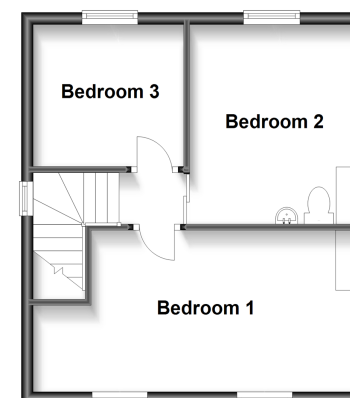
Rear Garden

Off Road Parking

Ground Floor
Approx. 40.4 sq. metres (434.9 sq. feet)

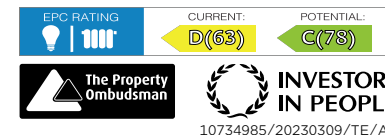


First Floor
Approx. 33.8 sq. metres (363.7 sq. feet)



Call Dover - 01304 214876 ■ wardsofKent.co.uk

- Legal advice should be taken to verify fixtures/fittings, planning, alterations and/or lease details
- Appliances & services are untested, dimensions are approximate and floor plans are not to scale
- Through a Homewise Home For Life Plan people aged 60+ can secure this property for up to 59% less, by purchasing a Lifetime Lease.



10734985/20230309/TE/AF