



**Guide Price**  
**£500,000**

**Freehold**

5x  3x  2x 

**Field View Road,  
Whitfield, Dover, Kent,  
CT16**

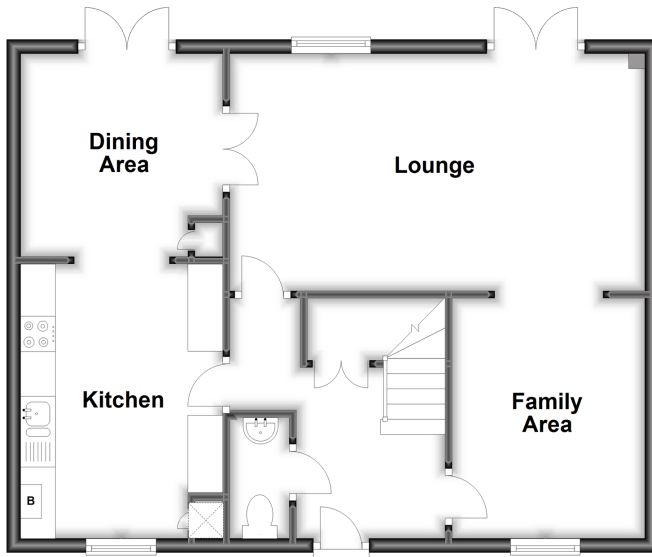
**OVER 60?**

Secure this property  
for up to **59% less!**

*Wards*  
Helping you move forwards

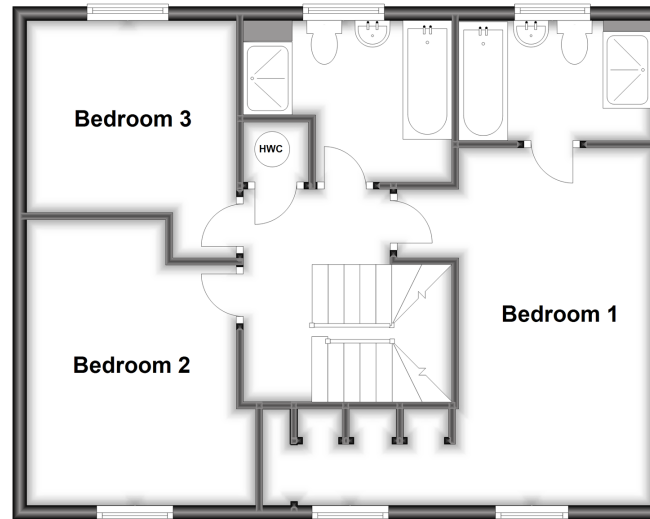
### Ground Floor

Approx. 61.4 sq. metres (661.0 sq. feet)



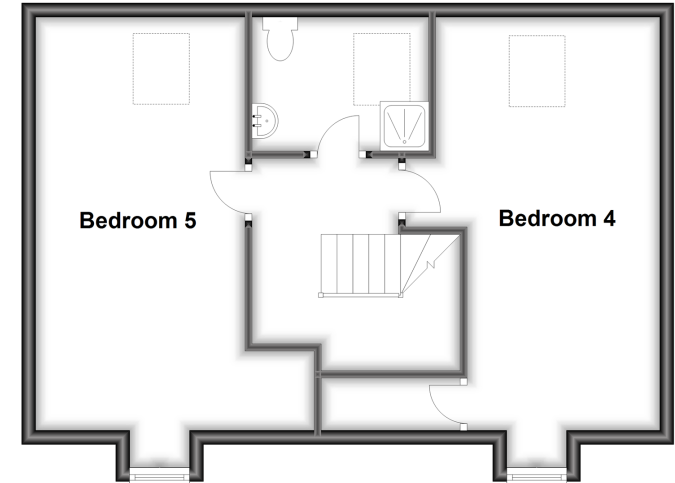
### First Floor

Approx. 61.4 sq. metres (661.0 sq. feet)



### Second Floor

Approx. 53.2 sq. metres (573.2 sq. feet)



## Accommodation

### GROUND FLOOR

Entrance Hallway  
Downstairs Cloakroom  
Kitchen : 12'10 x 9'4 (3.91m x 2.85m)  
Dining Area : 9'7 x 9'4 (2.92m x 2.85m)  
Lounge : 19'6 x 11'0 (5.95m x 3.36m)  
Family Area: 11'2 x 9'0 (3.41m x 2.75m)

### FIRST FLOOR

Landing  
Family Bathroom  
Bedroom 1 : (L-shaped) 16'9 x 8'11 (5.11m x 2.72m)  
plus 9'5 x 5'6 (2.87m x 1.68m)  
En-Suite Bathroom  
Bedroom 2 : 9'4 x 9'0 (2.85m x 2.75m)  
Bedroom 3 : 13'4 x 10'8 (4.07m x 3.25m)

### SECOND FLOOR

Landing  
Bedroom 4 : 19'2 x 11'11 (5.85m x 3.63m)  
Bedroom 5 : 19'2 x 9'3 (5.85m x 2.82m)  
Shower Room

### OUTSIDE

Front Garden  
Rear Garden  
Garage & Off Road Parking





## Main features

- Large family house set in a sought after location
- Ample off-road parking and garage, ideal for when the guests descend
- No onward chain complications
- Beautifully presented throughout, a real turn key home
- Low maintenance enclosed rear garden, perfect for children or pets



### Nearest Schools

Primary Schools: Whitfield and Aspen School 0.5 miles, Temple Ewell C of E Primary 1.4 miles, Green Park Community Primary 1.4 miles  
Secondary Schools: Dover Christchurch Academy 1.1 miles, Duke of York's Royal Military School 2.1 miles.



### Transport Information

Train Stations: Kearsney 1.4 miles, Martin Mill 2.5 miles, Dover Priory 2.8 miles



### Address

Field View Road, Whitfield, Dover, Kent, CT16



### Directions

For directions to this property please contact us.





**Wards**  
Helping you move forwards

Call Dover Branch 01304 214876 ■ [wardsofkent.co.uk](http://wardsofkent.co.uk)



■ Legal advice should be taken to verify fixtures/fittings, planning, alterations and/or lease details ■ Appliances & services are untested, dimensions are approximate and floor plans are not to scale  
■ Through a Homewise Home For Life Plan people aged 60+ can secure this property for up to 59% less, by purchasing a Lifetime Lease.



10734988/20230913/GH/GM