



Price
£400,000

Freehold

6x  5x  1x 

**Folkestone Road, Dover,
Kent, CT17**

Wards
Helping you move forwards



Main features

- Beautiful presented period property
- HMO licence - ideal for an AirBnB
- 4 en-suites and family bathroom
- No onward chain complications
- Ready made investment property in turn key condition, already set up for you to benefit from as being sold with furniture

Accommodation

GROUND FLOOR

Entrance Hallway
 Bedroom 1: 14'9 x 14'8 (4.50m x 4.47m)
 En-Suite Shower Room : 7'7 x 2'4 (2.31m x 0.71m)
 Bedroom 2: 11'9 x 11'3 (3.58m x 3.43m)
 En-Suite Shower Room : 7'7 x 2'5 (2.31m x 0.74m)
 Kitchen/Breakfast Room : 20'9 x 11'9 (6.33m x 3.58m)

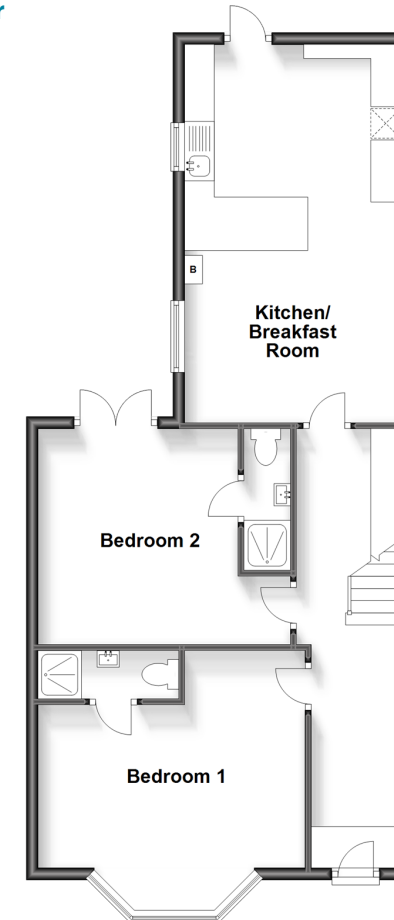
SPLIT LEVEL FIRST FLOOR

Landing
 Shower Room : 8'9 x 7'1 (2.67m x 2.16m)
 Bedroom 3: 12'1 x 10'4 (3.69m x 3.15m)
 En-Suite Shower Room : 9'3 x 2'5 (2.82m x 0.74m)
 Bedroom 6 (With sink): 12'0 x 7'9 (3.66m x 2.36m)
 Bedroom 5 (With sink): 15'1 x 11'7 (4.60m x 3.53m)
 Bedroom 4: 14'1 x 6'0 (4.30m x 1.83m)
 En-Suite Shower Room : 7'7 x 2'5 (2.31m x 0.74m)

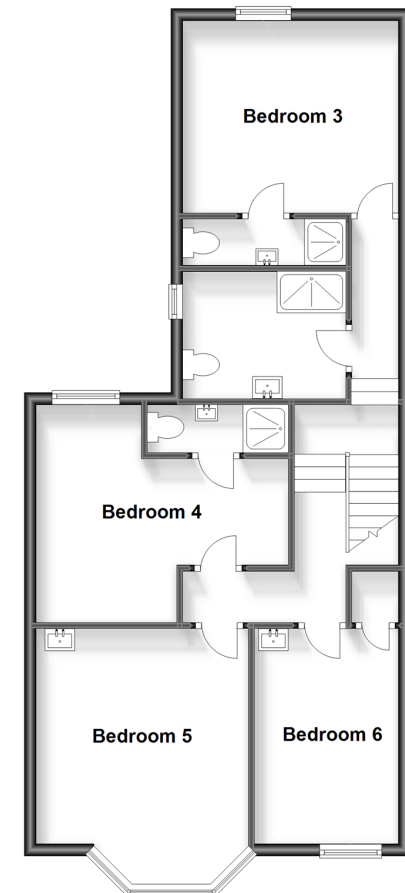
OUTSIDE

Front Garden
 Rear Garden
 Large Shed

Ground Floor
 Approx. 69.1 sq. metres (744.1 sq. feet)



Split Level First Floor
 Approx. 69.1 sq. metres (743.8 sq. feet)



Call Dover - 01304 214876 ■ wardsof Kent.co.uk

- Legal advice should be taken to verify fixtures/fittings, planning, alterations and/or lease details
- Appliances & services are untested, dimensions are approximate and floor plans are not to scale



10734998/20231002/OV/OV