



**Price**  
**£130,000**

**Leasehold**

1x  1x  1x 

**Ground Floor Flat,  
Folkestone Road, Dover,  
Kent, CT17**

**OVER 60?**

Secure this property  
for up to **59% less!**

*Wards*  
Helping you move forwards



## Main features

- Ideal first time buy or buy to let
- Recently refurbished to a high standard
- No onward chain complications
- Walking distance to Dover Priory railway station with fast link to London
- Could be available with a tenant in situ

## Accommodation

### GROUND FLOOR

#### Entrance Hallway

Lounge : 19'9 x 12'4 (6.02m x 3.76m)

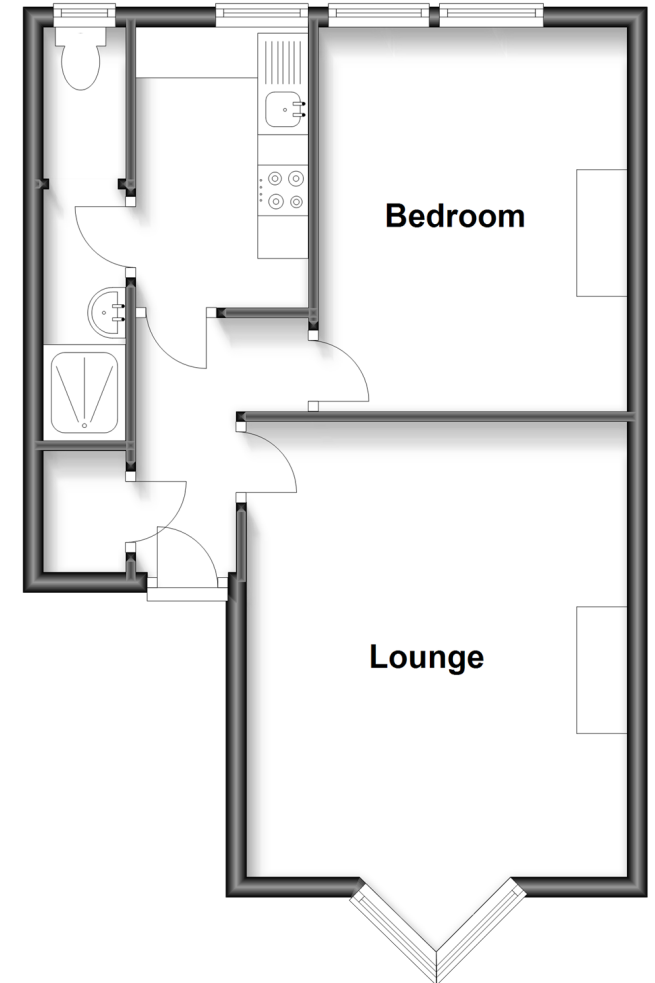
Kitchen : 9'0 x 5'4 (2.75m x 1.63m)

Shower Room : 13'4 x 2'6 (4.07m x 0.76m)

Bedroom : 12'3 x 9'9 (3.74m x 2.97m)

## Ground Floor

Approx. 43.0 sq. metres (462.8 sq. feet)



**Call Dover - 01304 214876 ■ [wardsofkent.co.uk](http://wardsofkent.co.uk)**

- Legal advice should be taken to verify fixtures/fittings, planning, alterations and/or lease details
- Appliances & services are untested, dimensions are approximate and floor plans are not to scale
- Through a Homewise Home For Life Plan people aged 60+ can secure this property for up to 59% less, by purchasing a Lifetime Lease.



10735002/20230629/OV/OV