



Guide Price
£245,000

Freehold

3x  2x  1x 

**Masons Road, Dover,
Kent, CT17**

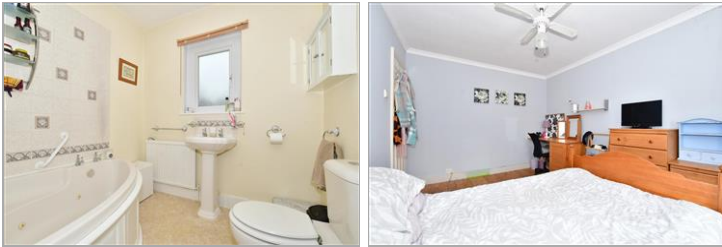
OVER 60?

Secure this property
for up to **59% less!**



Video Tour available

Wards
Helping you move forwards



Main features

- Family house
- Off street parking for 2 cars
- Quiet private cul de sac
- Under floor heating in conservatory as well as solar panels to help with the heating bills
- 2 bathrooms making the morning rush slightly more manageable

Accommodation

GROUND FLOOR

Entrance Porch
 Entrance Hallway
 Dining Room : 13'9 x 9'9 (4.19m x 2.97m)
 Lounge : 14'6 x 11'6 (4.42m x 3.51m)
 Kitchen: 11'0 x 7'9 (3.36m x 2.36m)
 Conservatory : 9'9 x 8'4 (2.97m x 2.54m)
 Shower Room: 7'1 x 6'4 (2.16m x 1.93m)

FIRST FLOOR

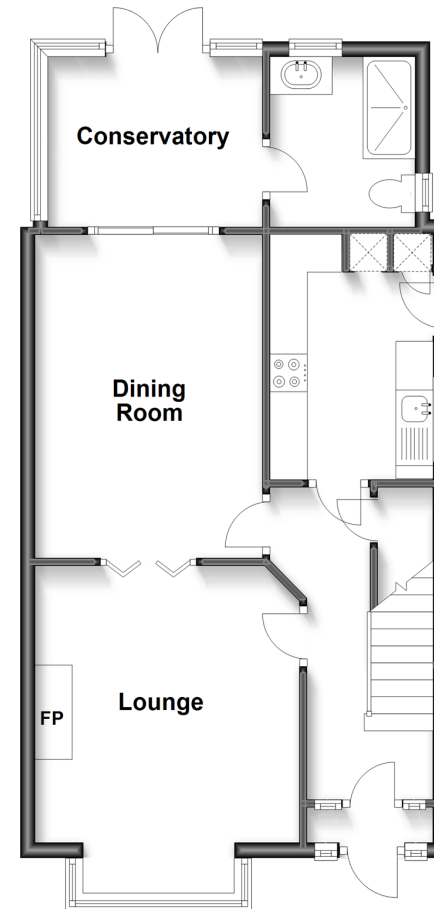
Landing
 Bathroom : 7'2 x 6'9 (2.19m x 2.06m)
 Bedroom 2: 14'5 x 9'9 (4.40m x 2.97m)
 Bedroom 3 : 8'9 x 6'2 (2.67m x 1.88m)
 Bedroom 1: 14'7 x 10'9 (4.45m x 3.28m)

OUTSIDE

Front Garden
 Rear Garden
 Shed
 Off Road Parking

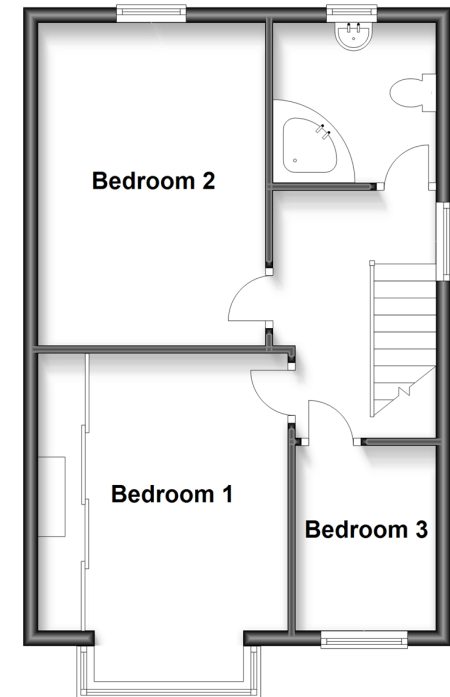
Ground Floor

Approx. 50.6 sq. metres (544.6 sq. feet)



First Floor

Approx. 43.8 sq. metres (471.5 sq. feet)



Call Dover - 01304 214876 ■ wardsofKent.co.uk

- Legal advice should be taken to verify fixtures/fittings, planning, alterations and/or lease details
- Appliances & services are untested, dimensions are approximate and floor plans are not to scale
- Through a Homewise Home For Life Plan people aged 60+ can secure this property for up to 59% less, by purchasing a Lifetime Lease.



10735004/20230728/OV/OV