



**Price**

**£210,000**

**Leasehold**

2x  1x  1x 

**Beaconsfield Road,  
Dover, Kent, CT16**

**OVER 60?**

Secure this property  
for up to **59% less!**

*Wards*  
Helping you move forwards



## Main features

- Purpose built top floor flat in the heart of Dover town
- Close to shops as well as schools
- Allocated parking space
- Open plan lounge & ideal first-time purchase
- Easy access to A2/M2 & the M20. Also, close-by is the mainline railway station with it fast links to London

## Accommodation

### TOP FLOOR

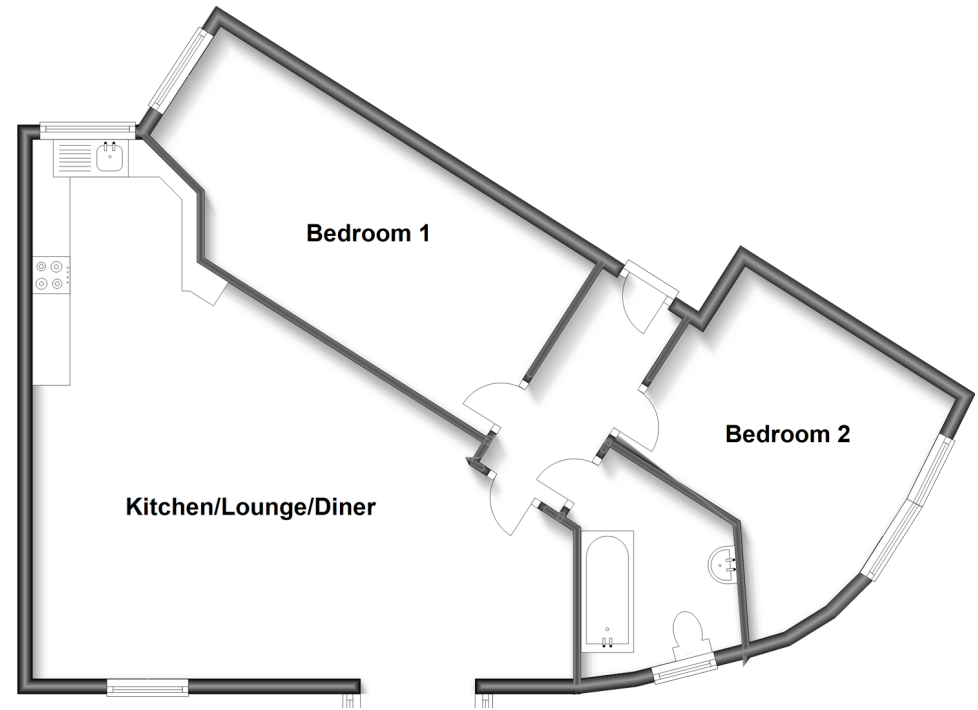
Entrance Hallway  
 Kitchen/Lounge/Diner: 23'6 x 17'8 (7.17m x 5.39m)  
 Bedroom 1 : 15'9 x 8'5 (4.80m x 2.57m)  
 Bedroom 2 : 11'7 x 10'1 (3.53m x 3.08m)  
 Bathroom : 8'8 x 6'1 (2.64m x 1.86m)

### OUTSIDE

Allocated Parking  
 Communal Gardens

### Top Floor

Approx. 73.1 sq. metres (786.7 sq. feet)



**Call Dover - 01304 214876 ■ wardsofkent.co.uk**

- Legal advice should be taken to verify fixtures/fittings, planning, alterations and/or lease details
- Through a Homewise Home For Life Plan people aged 60+ can secure this property for up to 59% less, by purchasing a Lifetime Lease.

- Appliances & services are untested, dimensions are approximate and floor plans are not to scale